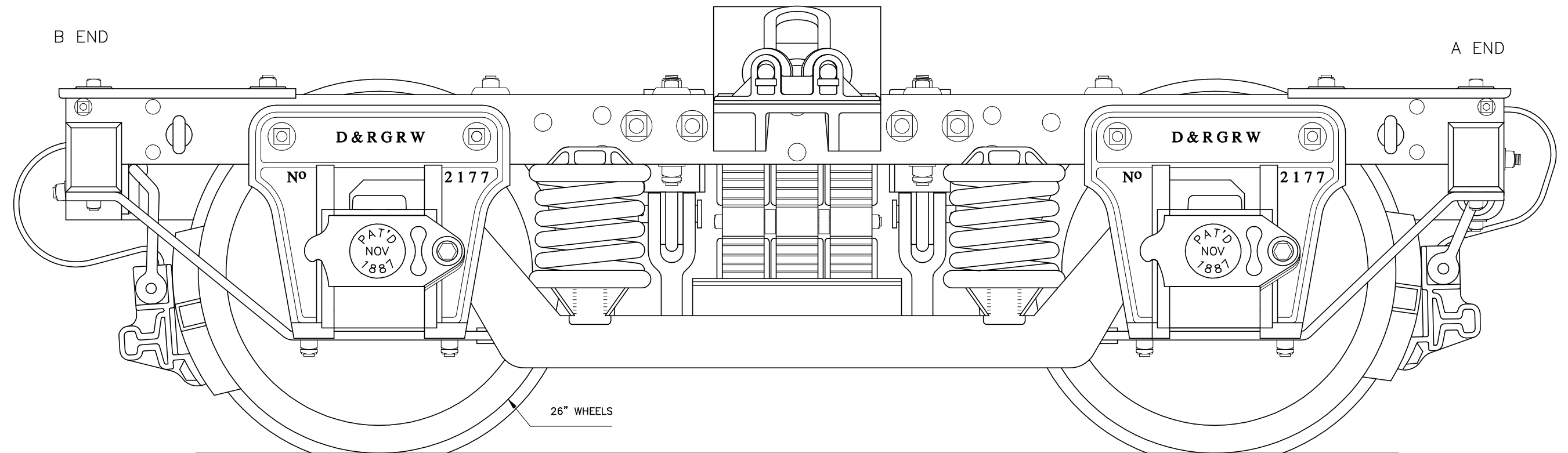


D&RGW PASSENGER TRUCKS



PROTOTYPE INFORMATION

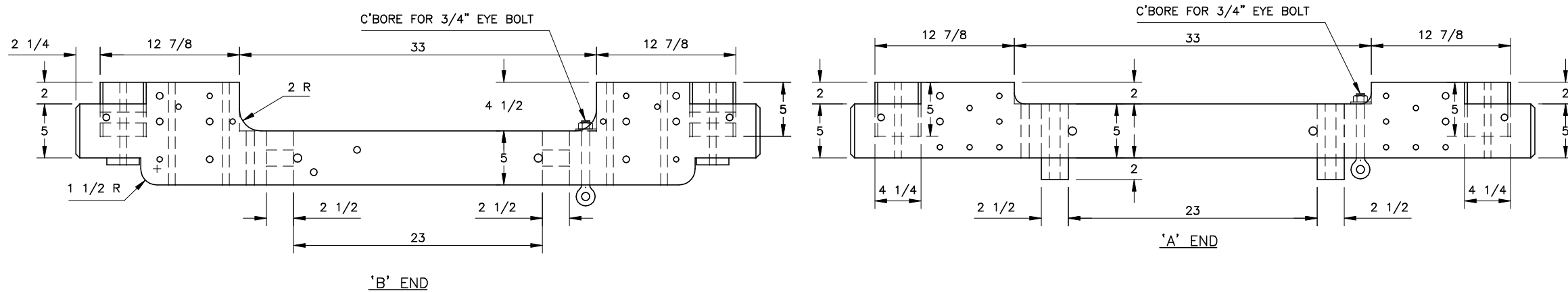
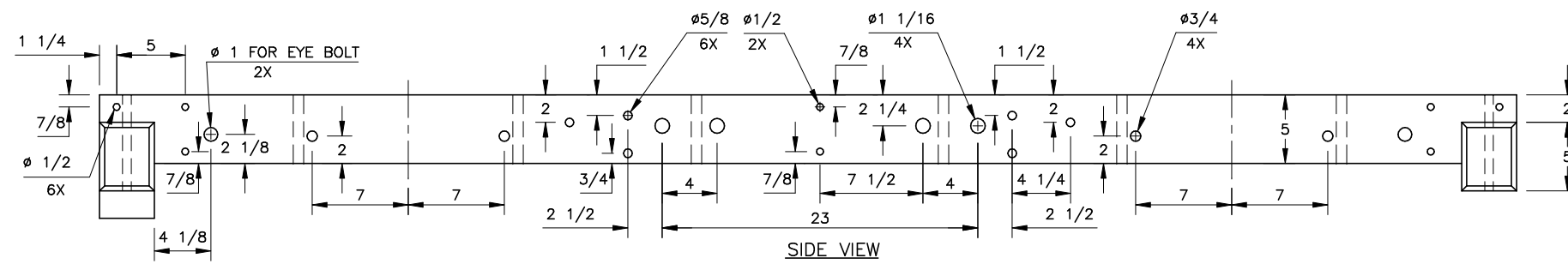
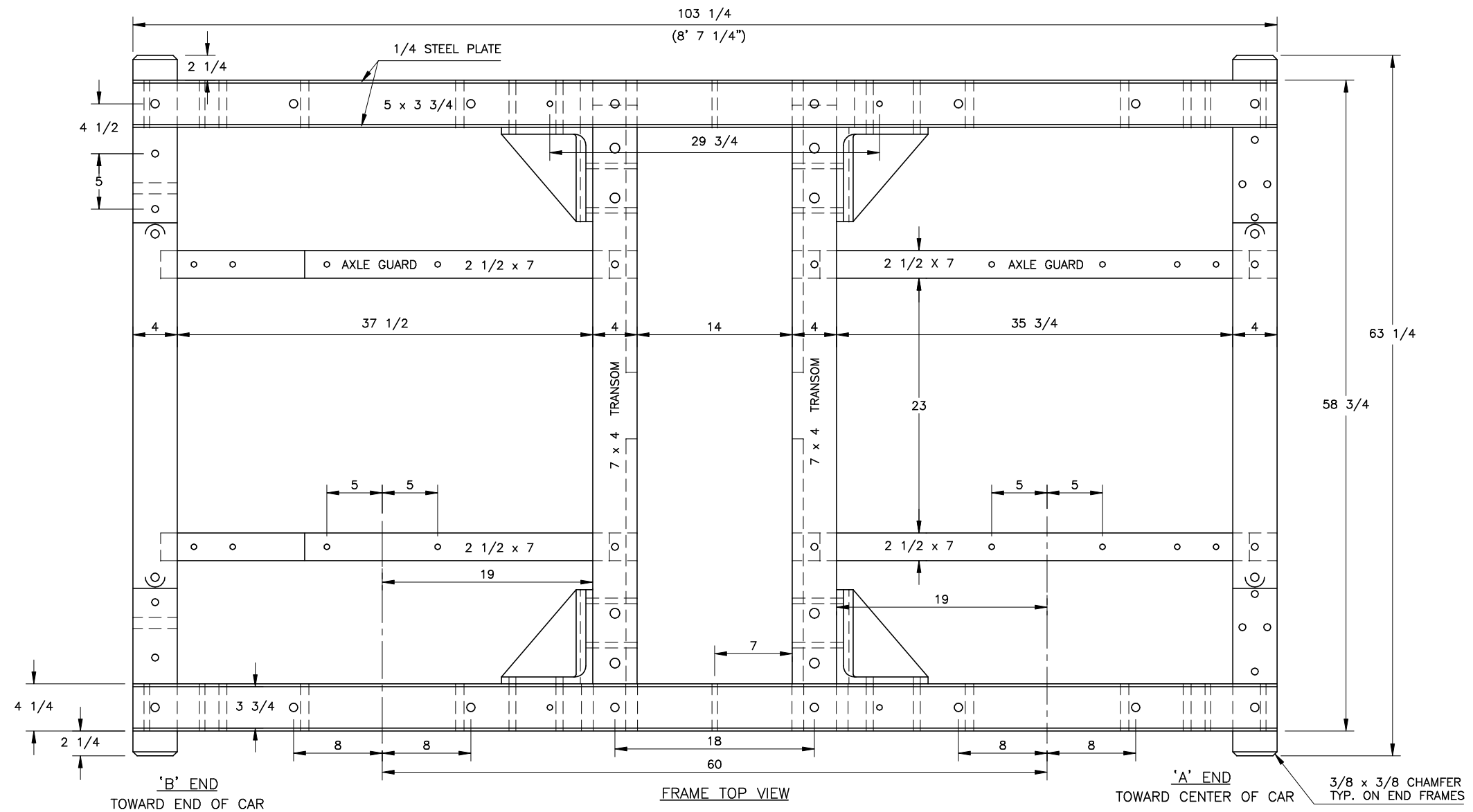
This plan set includes detail drawings of the Denver & Rio Grande 5 ft. wheelbase passenger trucks. Drawings reflect the trucks after the rebuild in the 1920's, which added corner braces to the frames, and heavier transom braces. Additional revisions at that time included the flying bolster with side roller bearings. Generally, the plans match the trucks used on coach #280.

Data and information researched by Jeff Smith.
CAD drawings by Jim Schmidt.

E-mail address: branchlineprod@msn.com

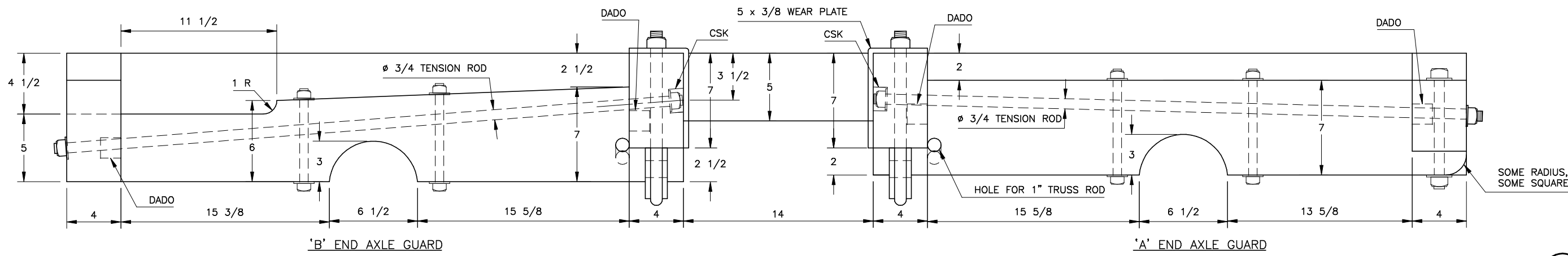
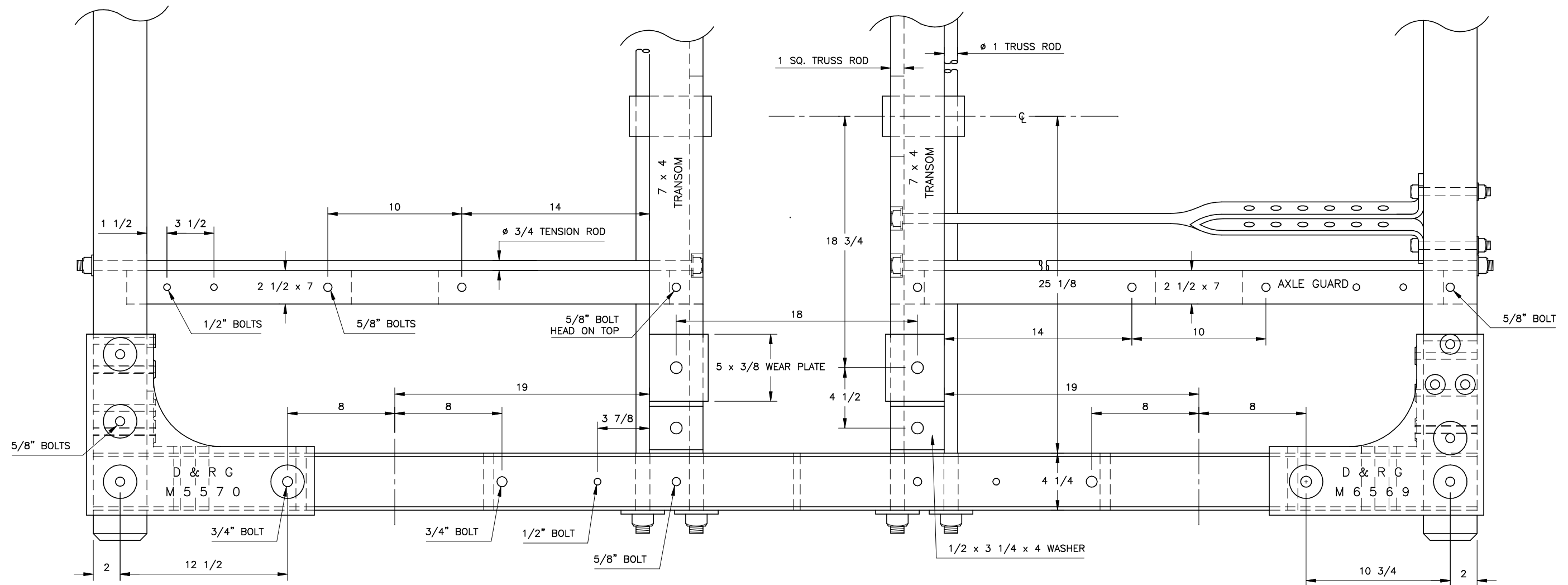
SHEET INDEX

1	FRAME	10	PEDESTAL STRAPS
2	FRAME DETAILS	11	END BOLT LOCATIONS
3	TRANSOM - EQ. BEAM	12	SWING BOLSTER W/ ROLLERS
4	CORNER BRACES	13	ROLLER BEARINGS
5	LEAF SPRINGS	14	BOLSTER & SPRING ASSY.
6	PEDESTAL	15	BRAKE LEVERS
7	SPRING SEATS, BRACES	16	BRAKE HEAD (OUTSIDE HUNG)
8	JOURNAL BOXES	17	BRAKE BEAM FULCRUM
9	BRAKE HANGERS	18	WHEELS AND AXLES



Data Compiled by Jeff Smith, Drawing by Jim Schmidt

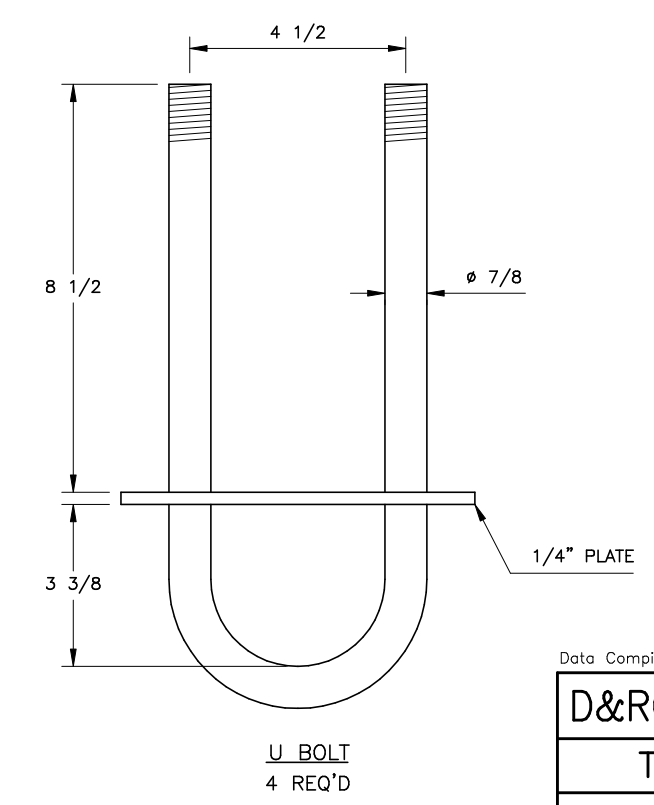
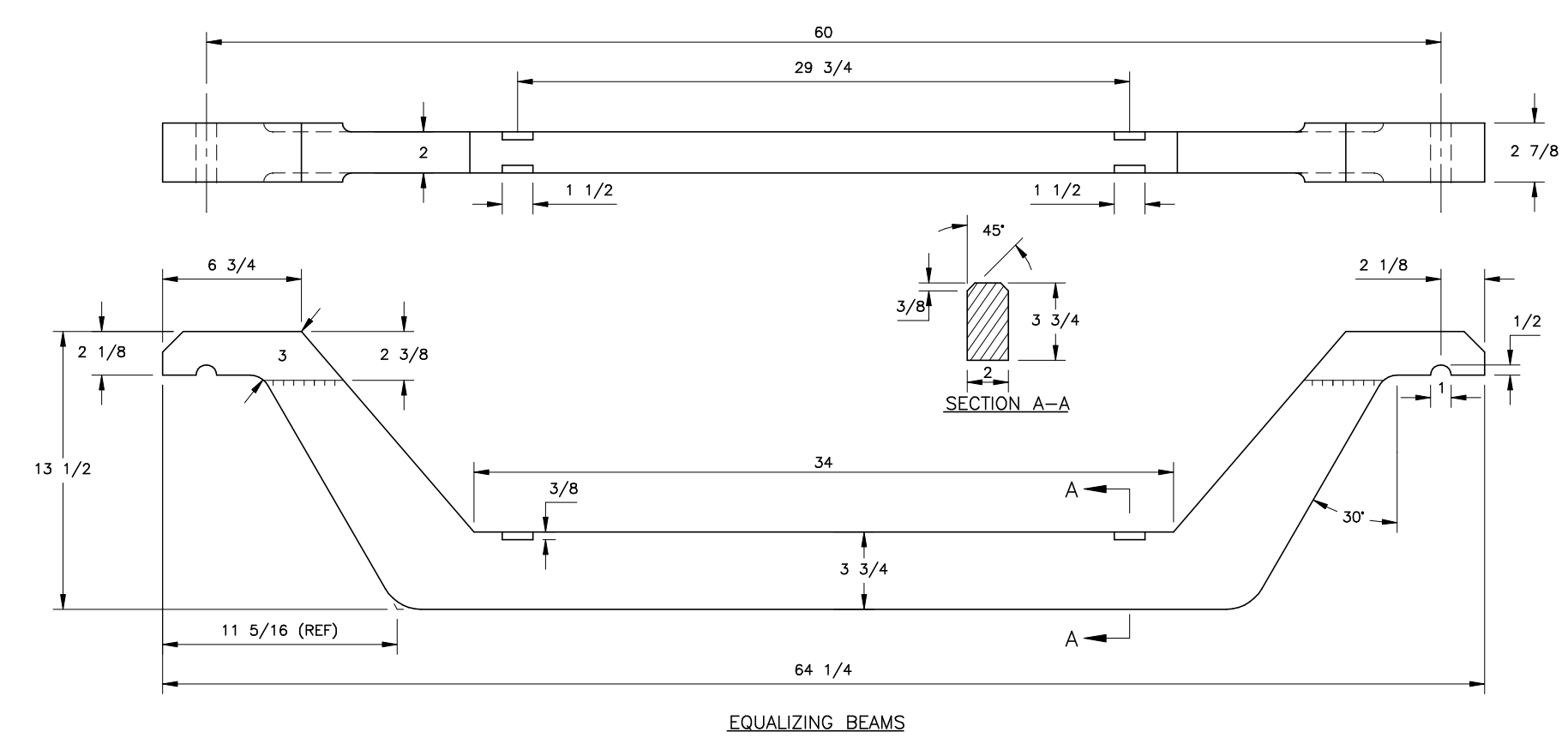
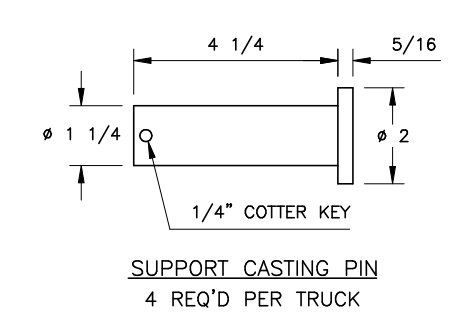
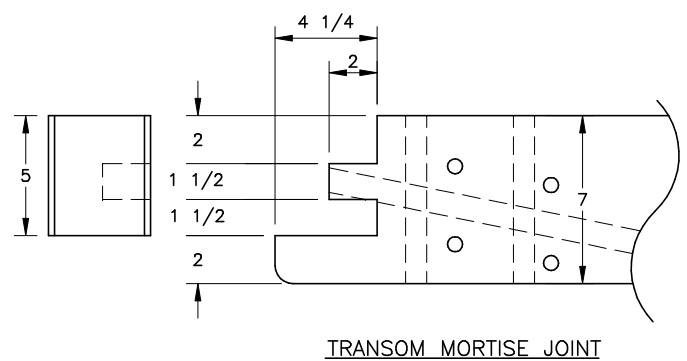
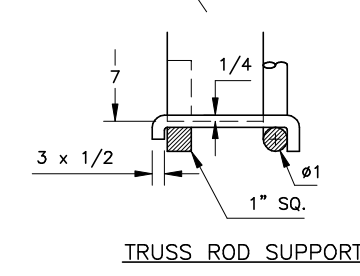
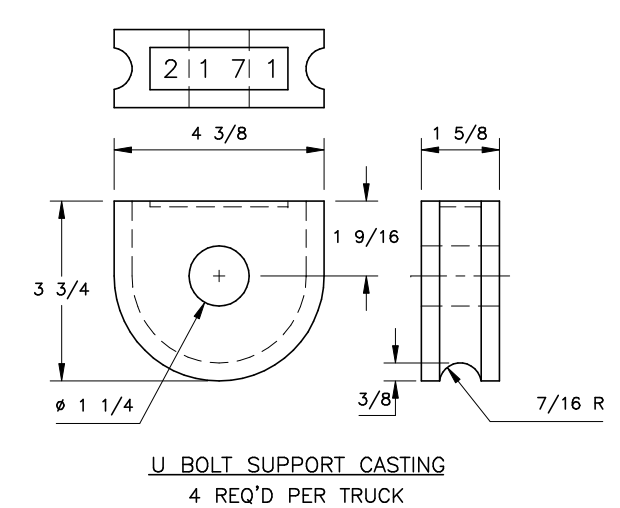
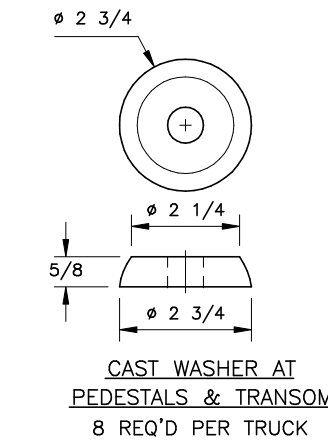
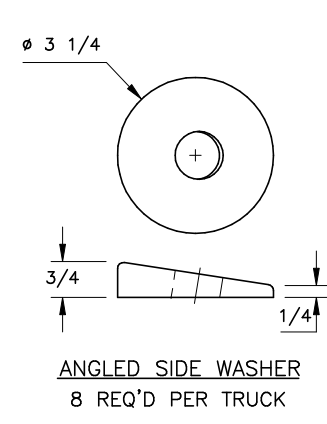
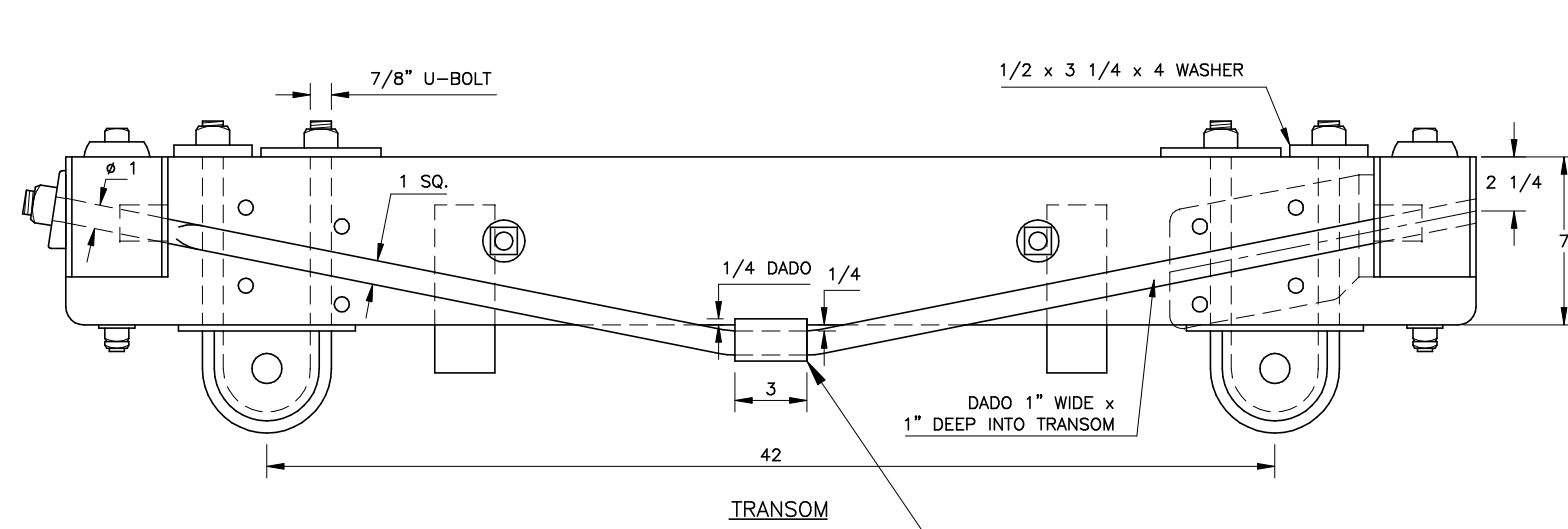
D&RGW PASSENGER TRUCKS	
FRAME	
PROTOTYPE	1" = 1'
File: PTK\ 01PTFRAME	Rev: 1-20-2017



FRAME SECTION SHOWING AXLE GUARDS

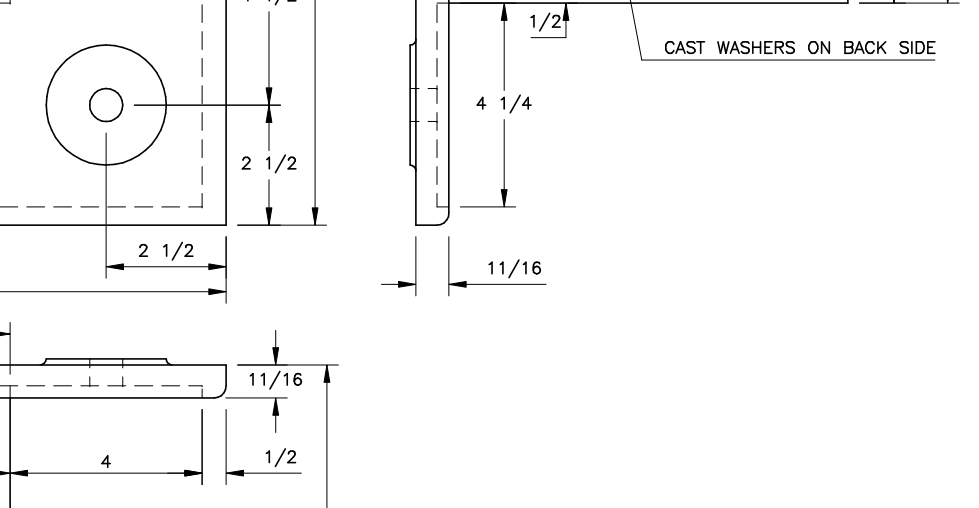
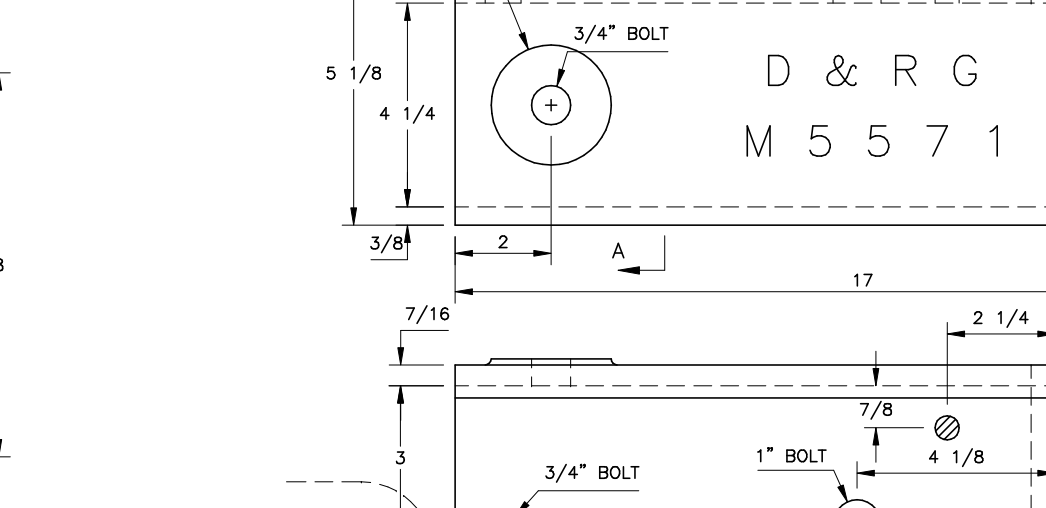
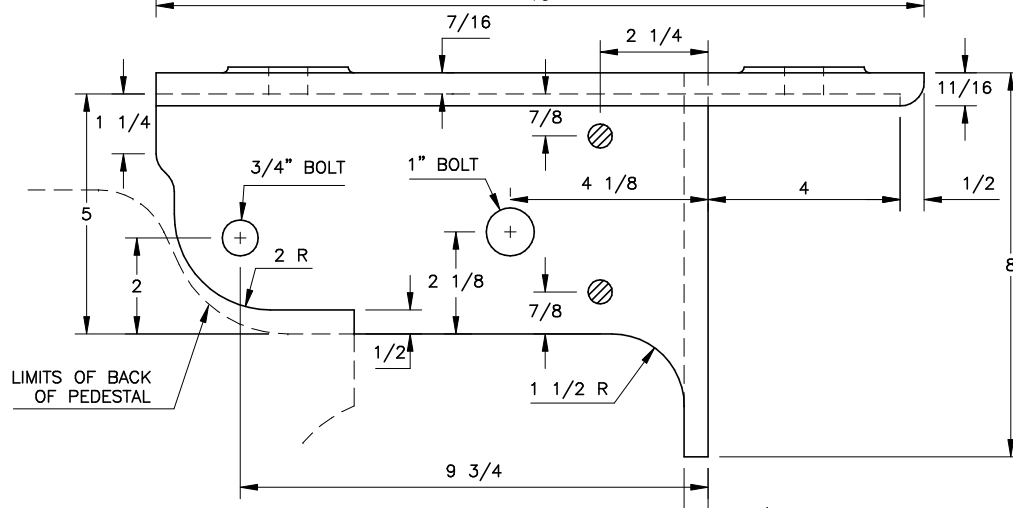
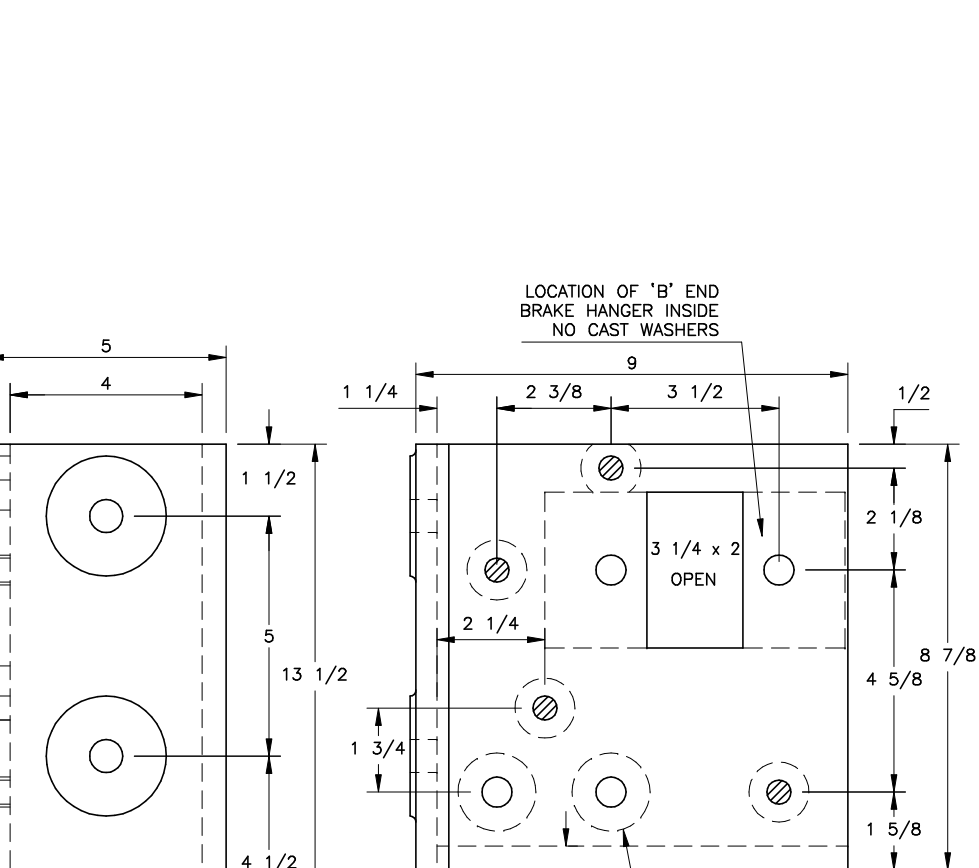
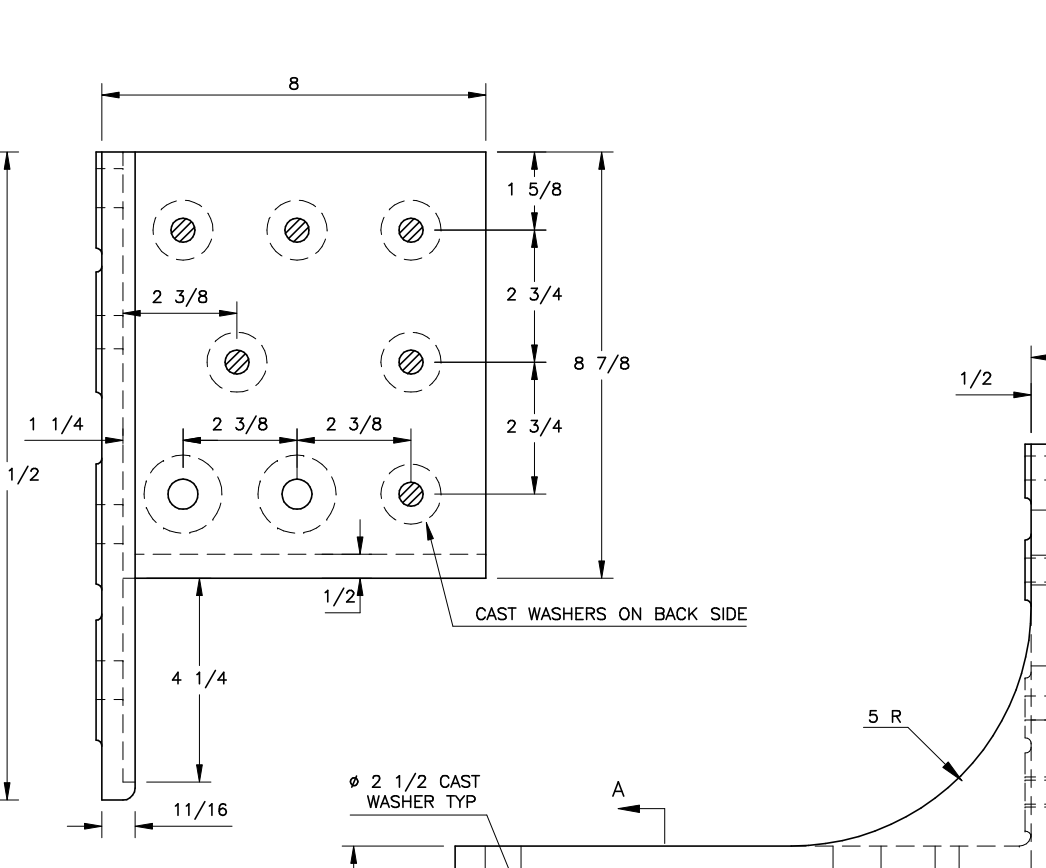
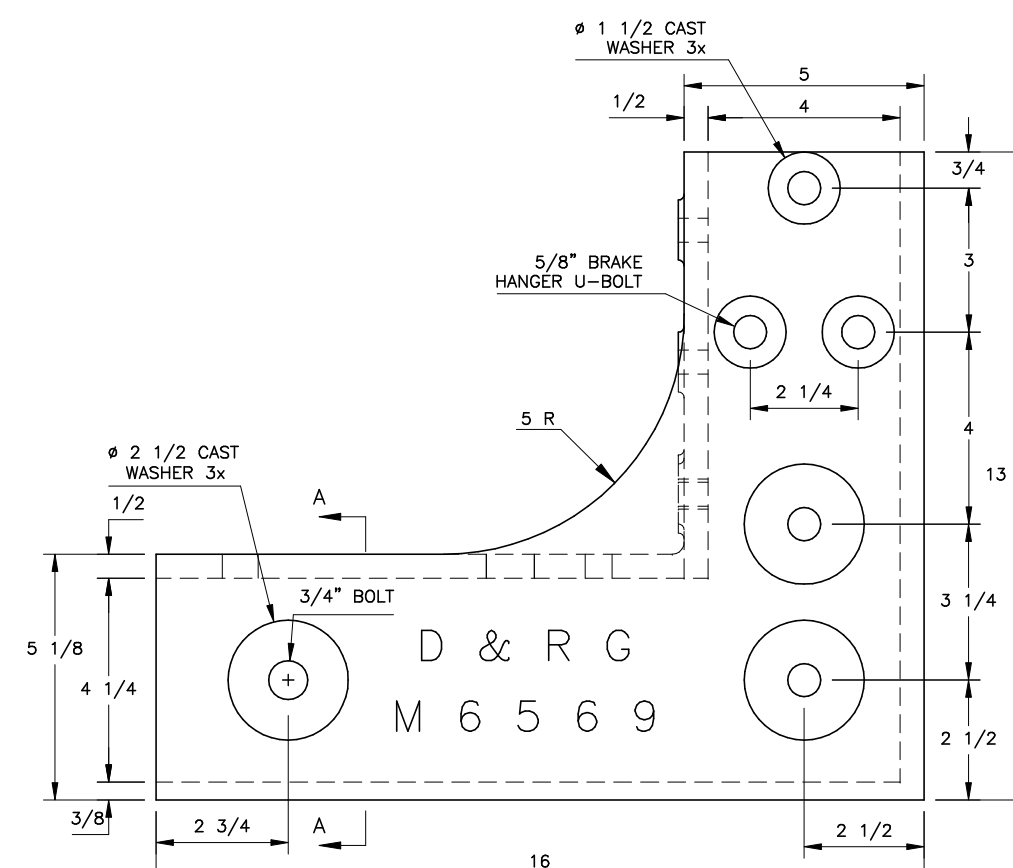
Data Compiled by Jeff Smith, Drawing by Jim Schmidt

D&RGW PASSENGER TRUCKS	
FRAME DETAILS	
PROTOTYPE	1 1/2" = 1'
File: PTK\ 02ptFRAMDET	Rev: 1-20-2017



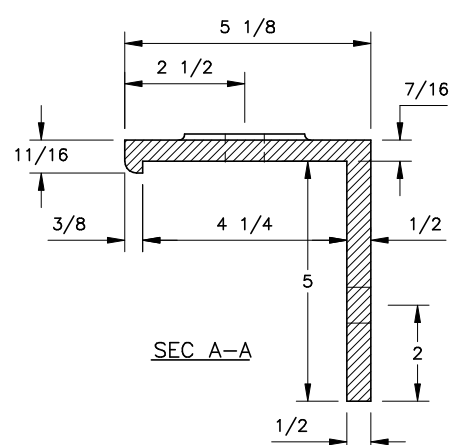
Data Compiled by Jeff Smith, Drawing by Jim Schmidt

D&RGW PASSENGER TRUCKS	
TRANSOM - EQ. BEAM	
PROTOTYPE	1 1/2" = 1'
File: PTK\ 03ptTRANSOM	Rev: 1-12-2017



'A' END CORNER BRACE
 1 REQ'D LT, #6569 (SHOWN)
 1 REQ'D RT, #6568

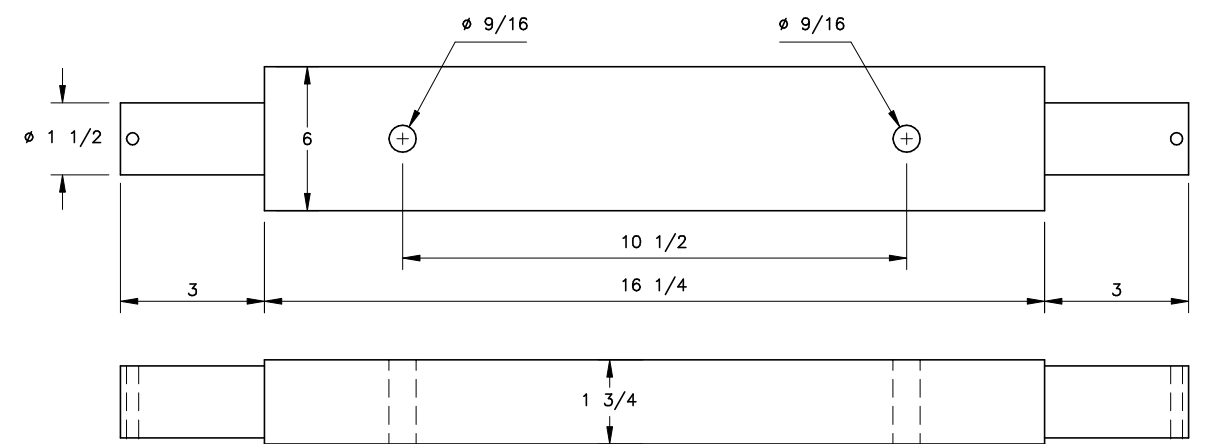
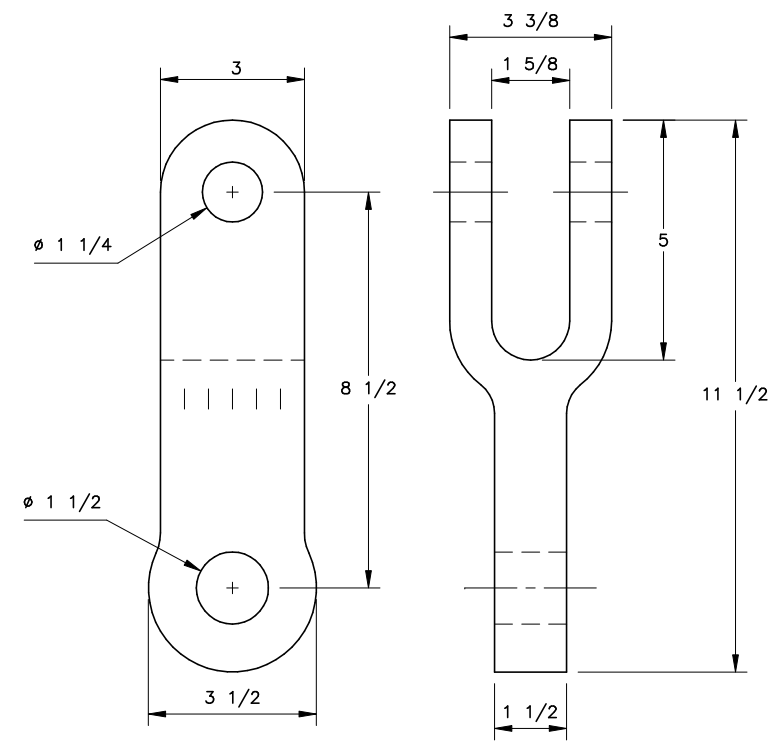
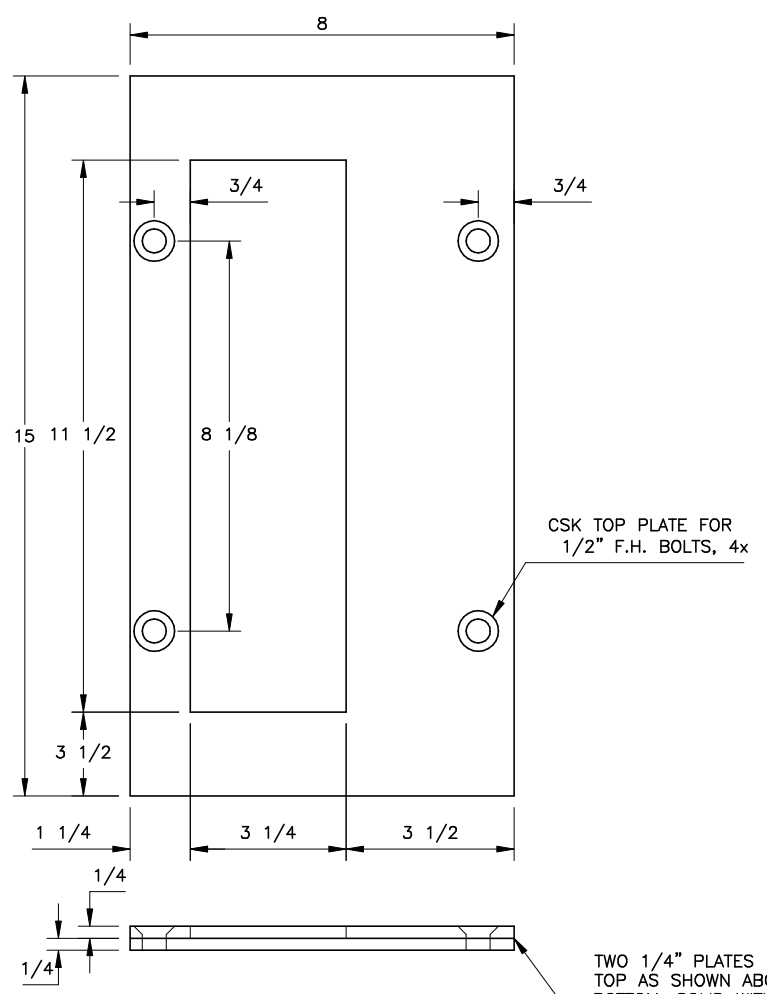
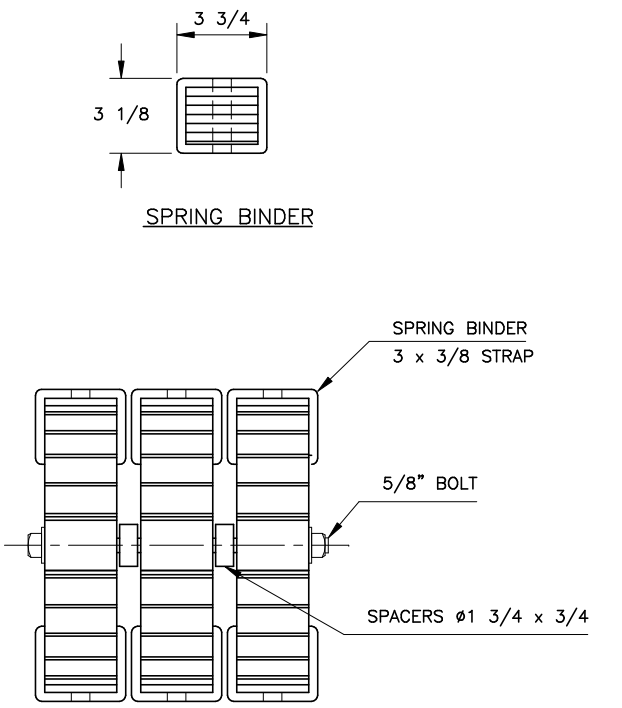
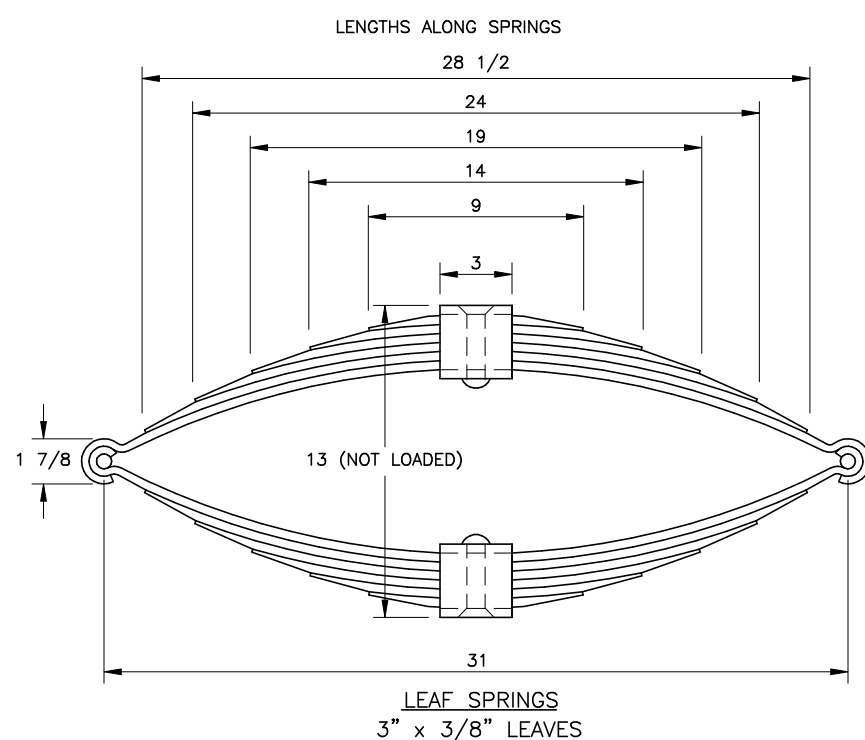
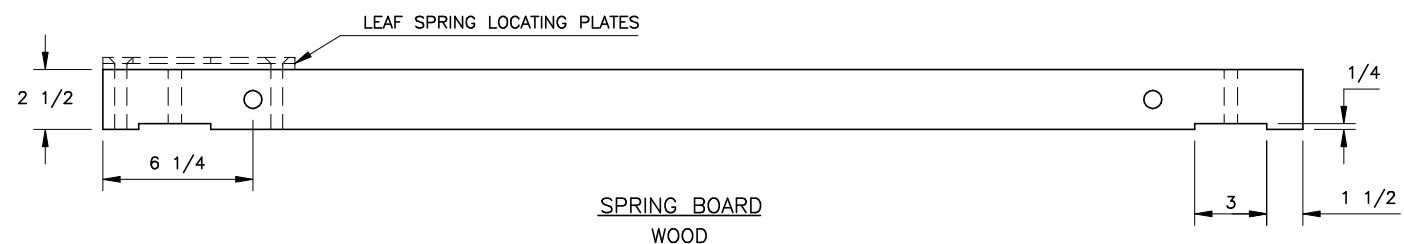
'B' END CORNER BRACE
 1 REQ'D RT, #5571 (SHOWN)
 1 REQ'D LT, #5570



- 1/2" BOLT
- 5/8" BOLT (UNLESS NOTED)

Data Compiled by Jeff Smith, Drawing by Jim Schmidt

D&RGW PASSENGER TRUCKS	
CORNER BRACES	
PROTOTYPE	3" = 1'
File: PTK\ 04PTBRACES	Rev: 1-12-2017



SPRING BOARD HANGERS
4 REQ'D PER TRUCK

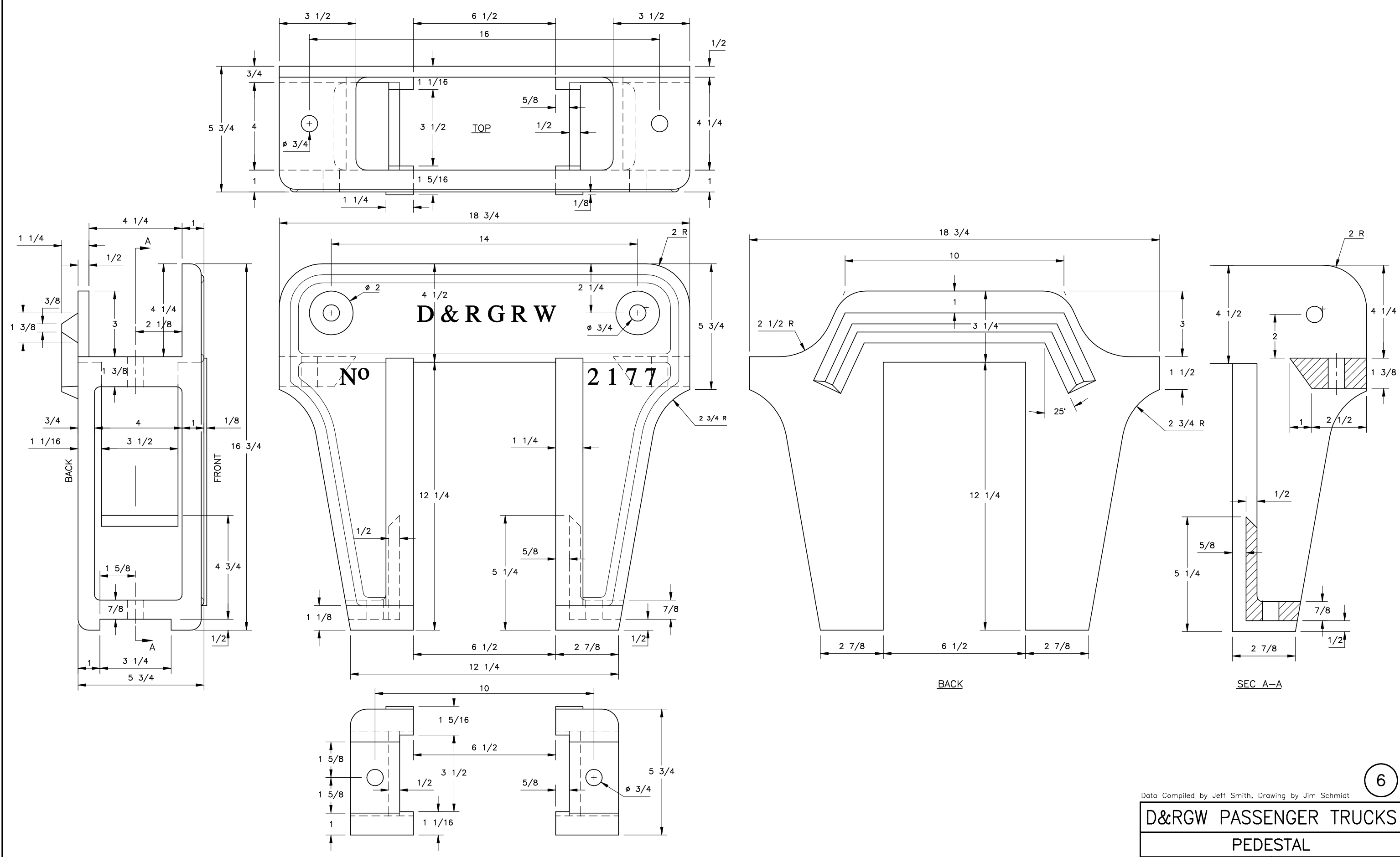
SPRING BOARD SUPPORT
2 REQ'D PER TRUCK

LEAF SPRING LOCATING AND WEAR PLATE
2 SETS REQ'D PER TRUCK

TWO 1/4" PLATES
TOP AS SHOWN ABOVE
BOTTOM, SOLID WITH FOUR HOLES

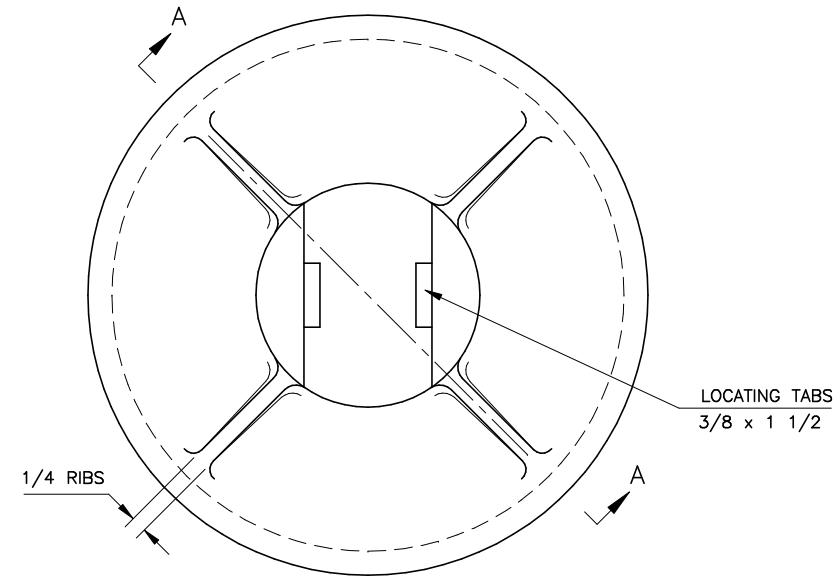
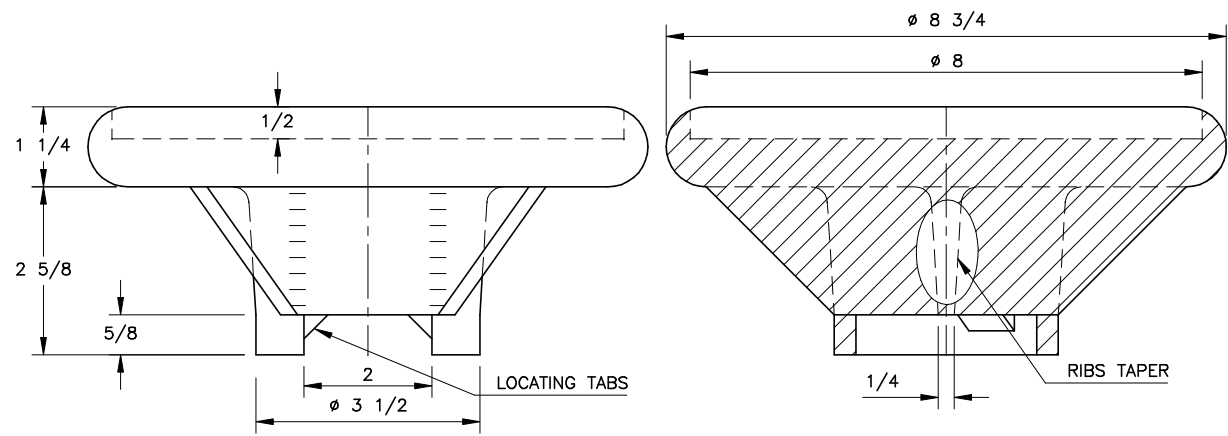
Data Compiled by Jeff Smith, Drawing by Jim Schmidt

D&RGW PASSENGER TRUCKS	
LEAF SPRINGS	
PROTOTYPE	SCALE VARIES
File: PTK\ 05ptLEAFSPR	Rev: 1-20-2017



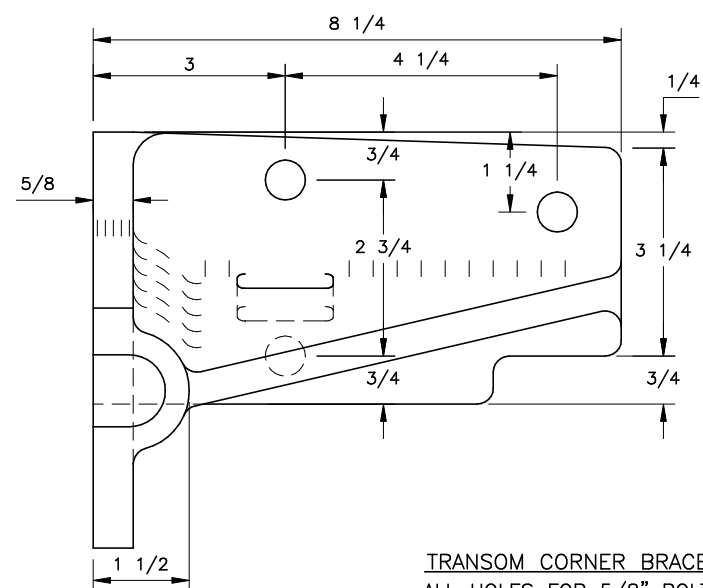
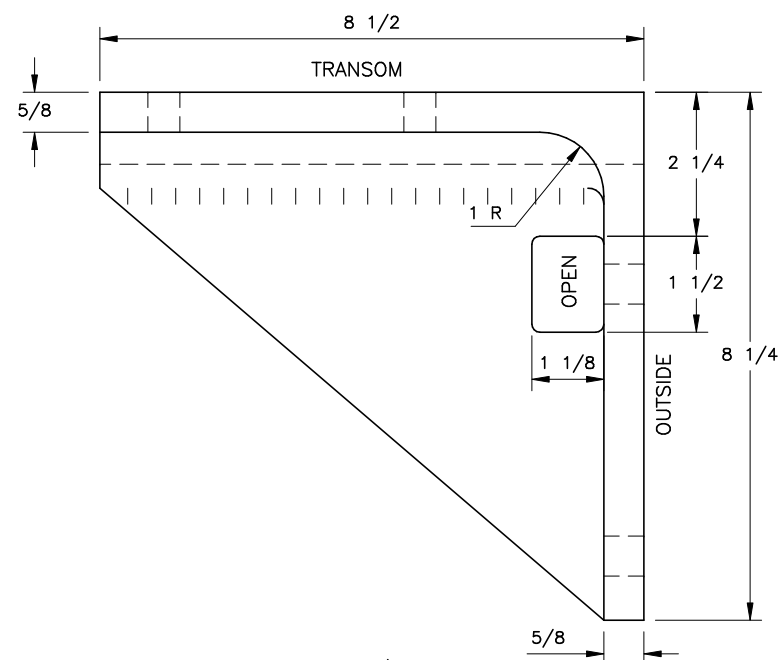
Data Compiled by Jeff Smith, Drawing by Jim Schmidt

D&RGW PASSENGER TRUCKS	
PEDESTAL	
PROTOTYPE	3" = 1'
File: PTK\ 06ptPEDESTAL	Rev: 1-8-2017

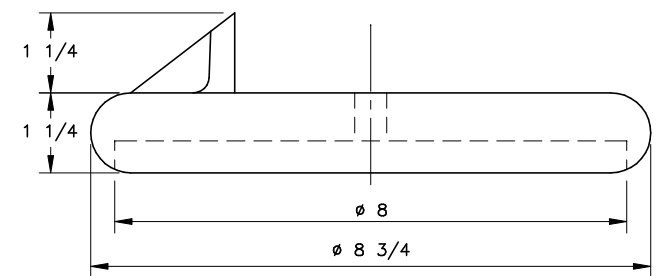
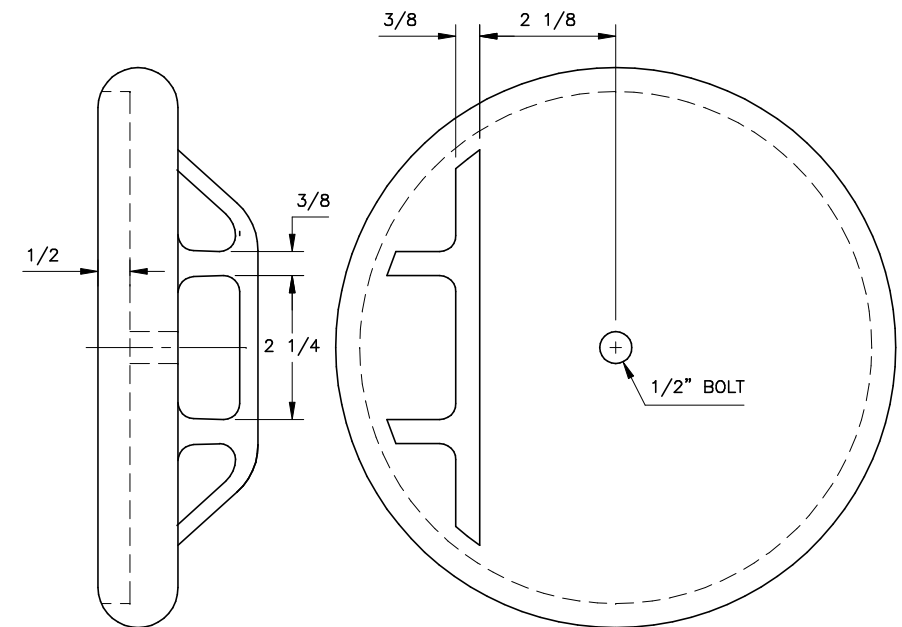
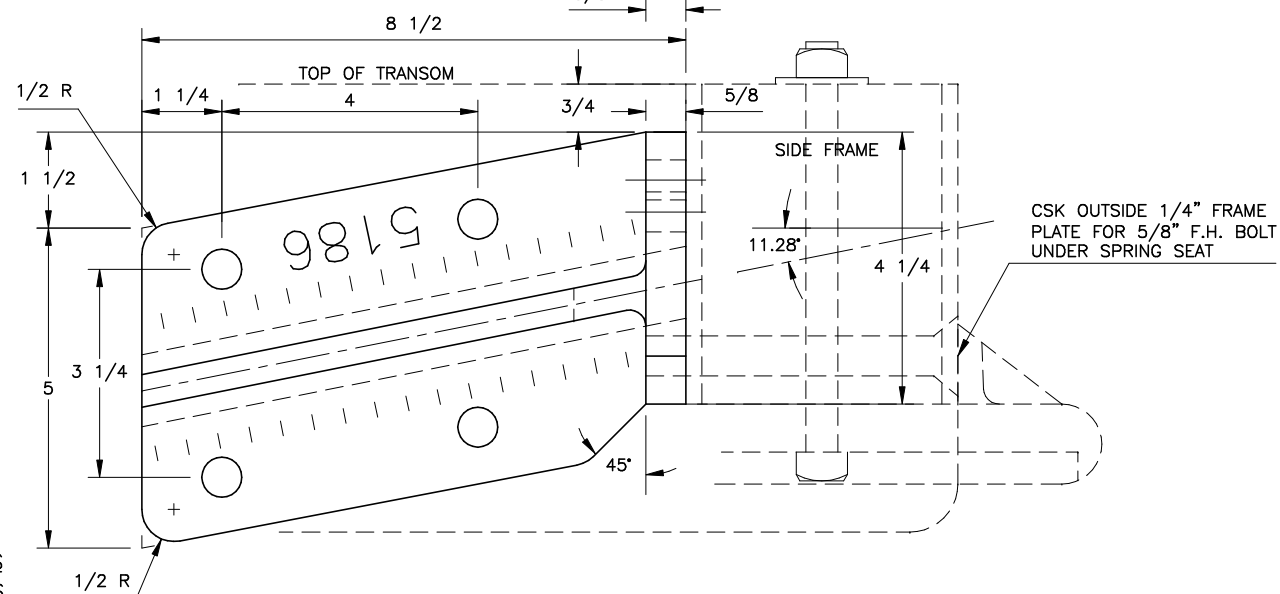


BOTTOM SPRING SEAT
PATT NO. 2183
4 REQ'D

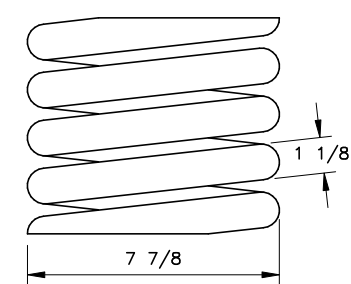
SEC A-A



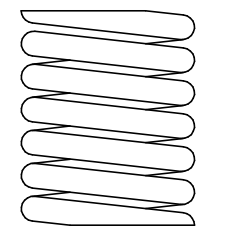
TRANSOM CORNER BRACES
ALL HOLES FOR 5/8" BOLTS
2 REQ'D EA, LT & RT
PATT NO. 5186 & 5187



TOP SPRING SEAT
PATT NO. 2182
4 REQ'D



OUTER COIL SPRING
HALF SIZE
4 REQ'D PER TRUCK



INNER SPRINGS ARE WOUND THE OTHER DIRECTION.

INNER COIL SPRING
HALF SIZE
4 REQ'D PER TRUCK

Data Compiled by Jeff Smith, Drawing by Jim Schmidt

D&RGW PASSENGER TRUCKS

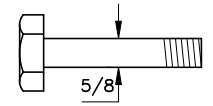
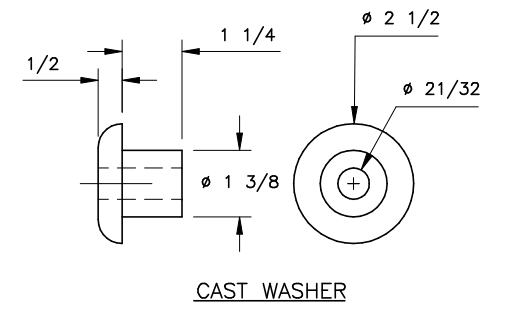
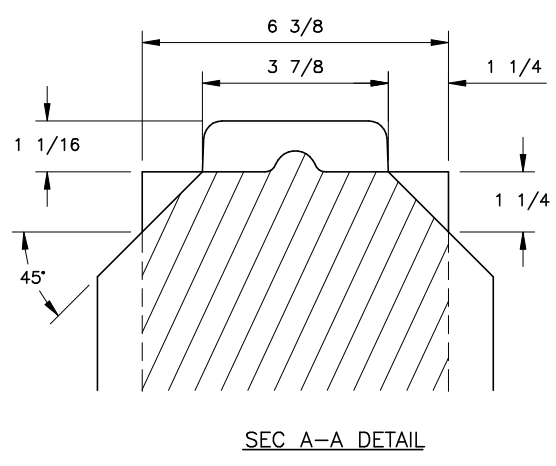
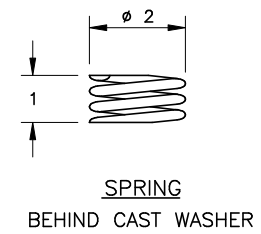
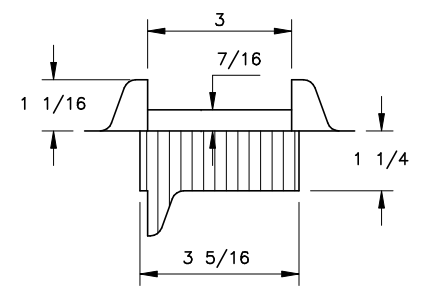
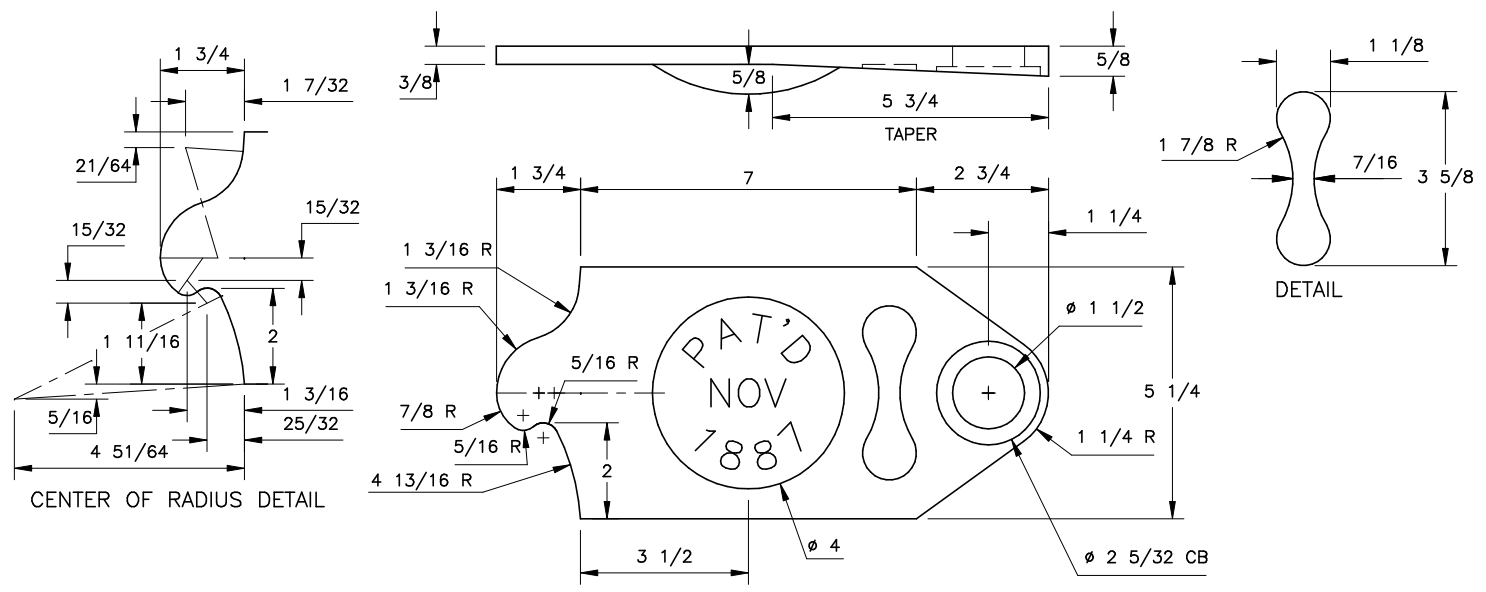
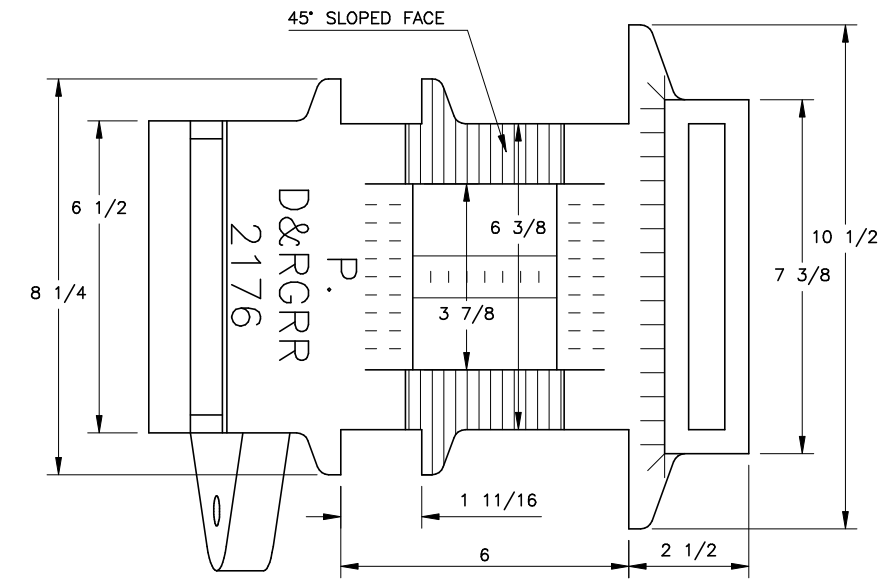
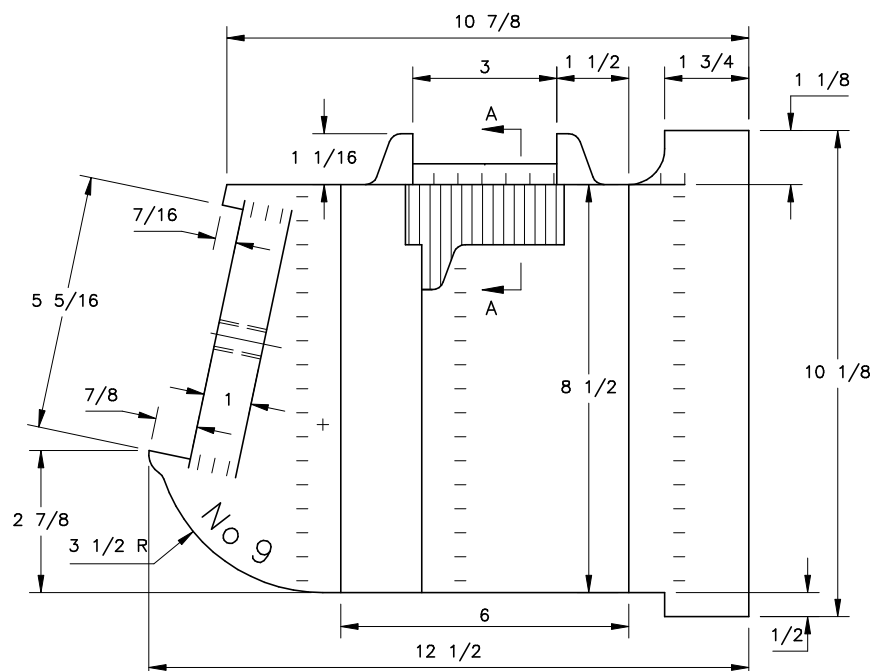
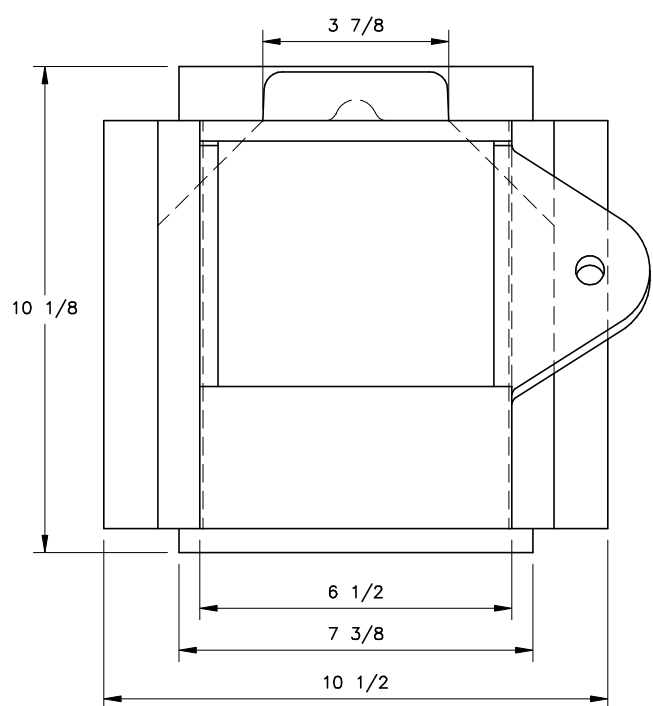
SPRING SEATS, BRACES

PROTOTYPE

4" = 1'

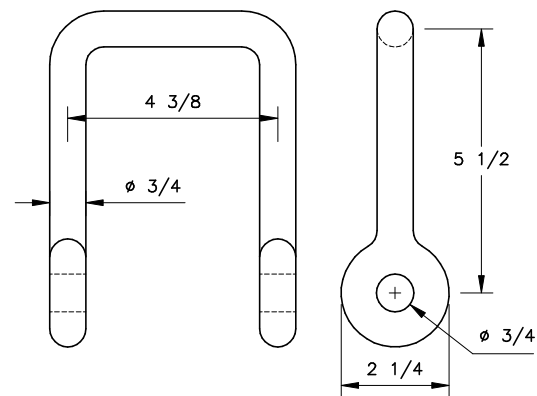
File: PTK\ 07ptSPRSEAT

Rev: 1-13-2017

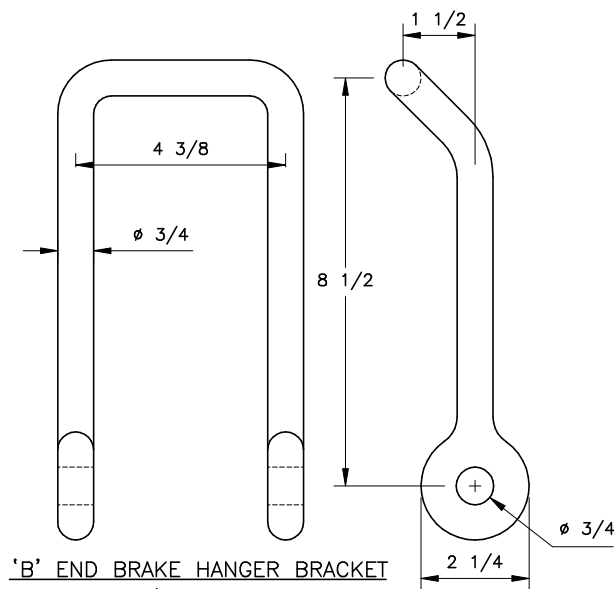


Data Compiled by Jeff Smith, Drawing by Jim Schmidt

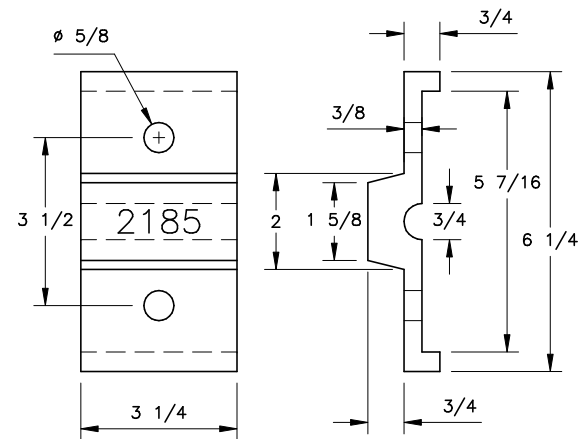
D&RGW PASSENGER TRUCKS	
JOURNAL BOXES	
PROTOTYPE	3" = 1'
File: PTK\ 08ptJOURPBX	Rev: 1-22-2017



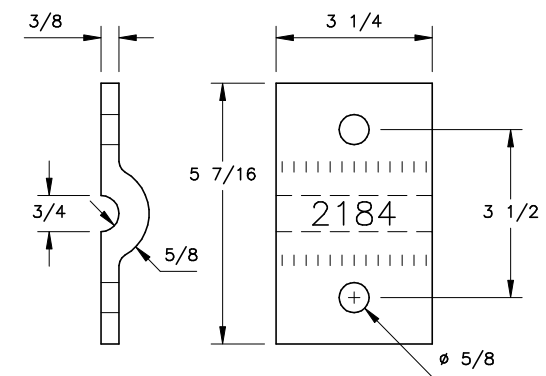
'A' END BRAKE HANGER BRACKET
2 REQ'D PER TRUCK



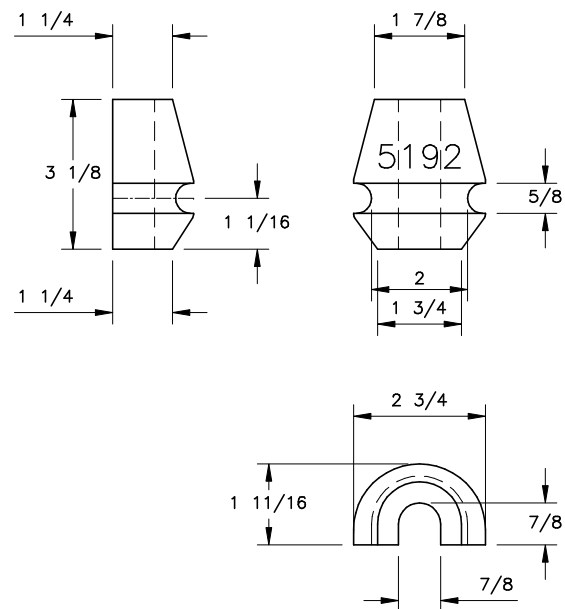
'B' END BRAKE HANGER BRACKET
2 REQ'D PER TRUCK



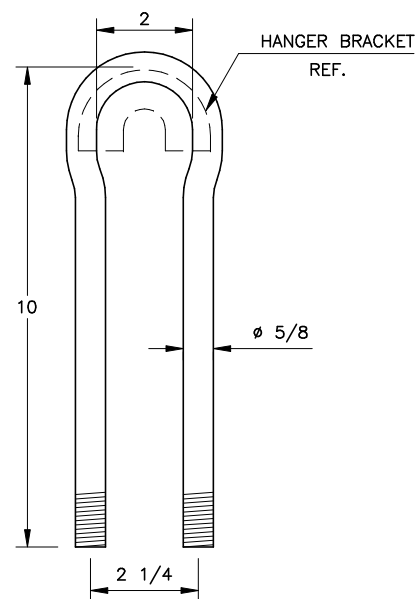
'B' END BRAKE HANGER BRACKET
2 REQ'D PER TRUCK



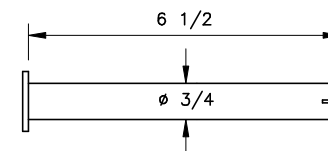
'B' END BRAKE HANGER BRACKET
2 REQ'D PER TRUCK



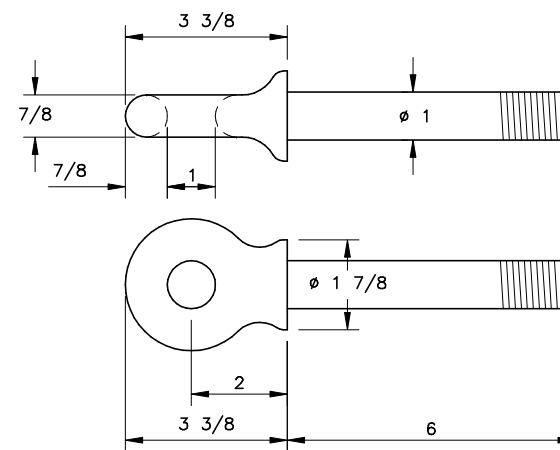
'A' END BRAKE HANGER BRACKET
2 REQ'D PER TRUCK



5/8" U-BOLT
2 REQ'D PER TRUCK



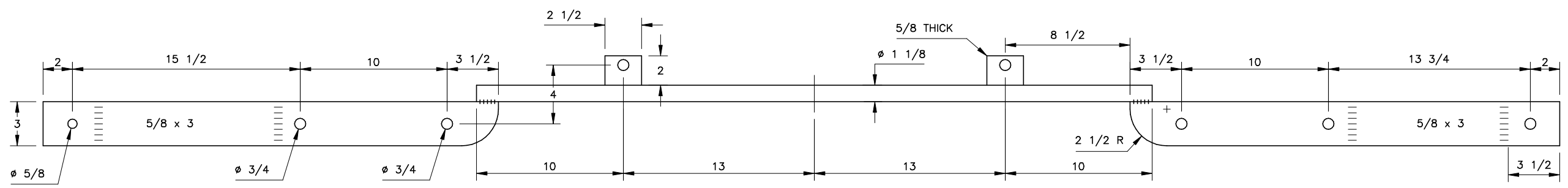
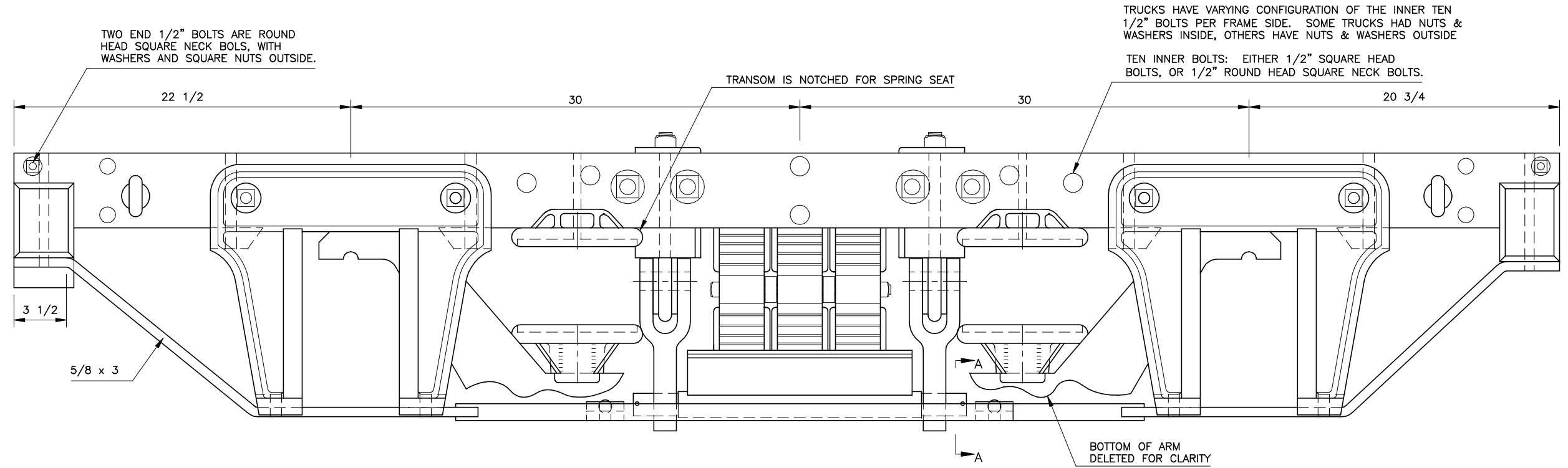
BRAKE HANGER BRACKET PIN



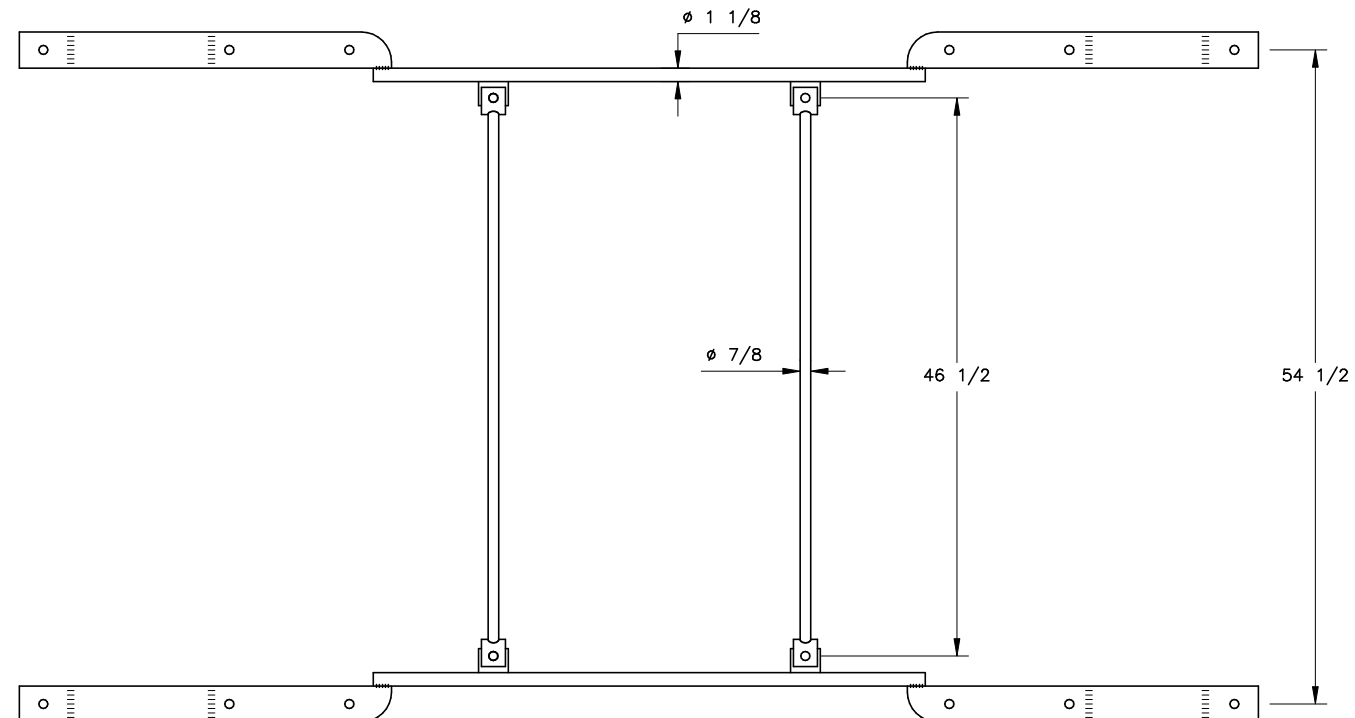
SAFETY CHAIN EYE BOLTS
4 REQ'D PER TRUCK

Data Compiled by Jeff Smith, Drawing by Jim Schmidt

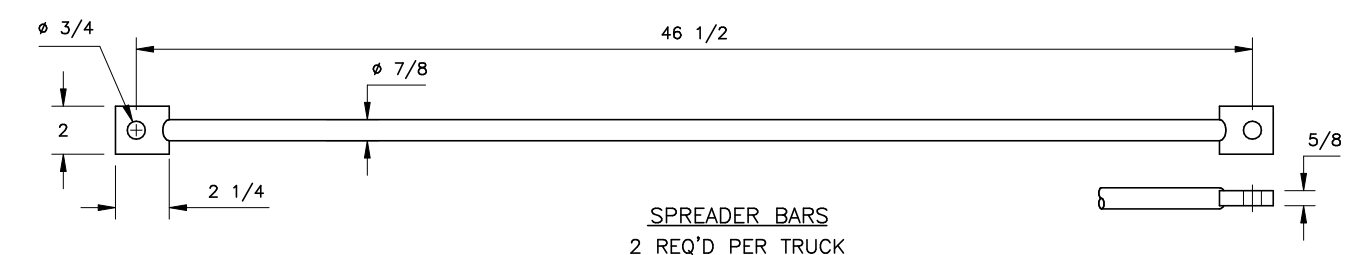
D&RGW PASSENGER TRUCKS	
BRAKE HANGERS	
PROTOTYPE	3" = 1'
File: PTK\ 09ptHANGERS	Rev: 1-16-2017



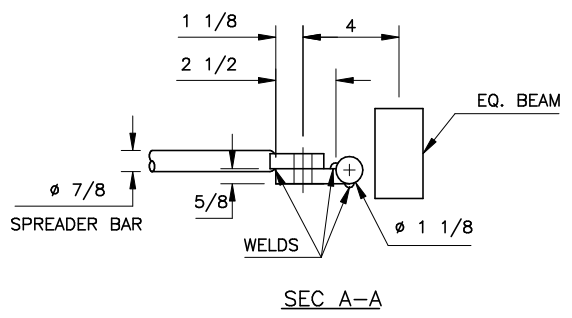
BOTTOM PEDESTAL STRAP BRACES
2 REQ'D PER TRUCK



ASSEMBLY
HALF SIZE

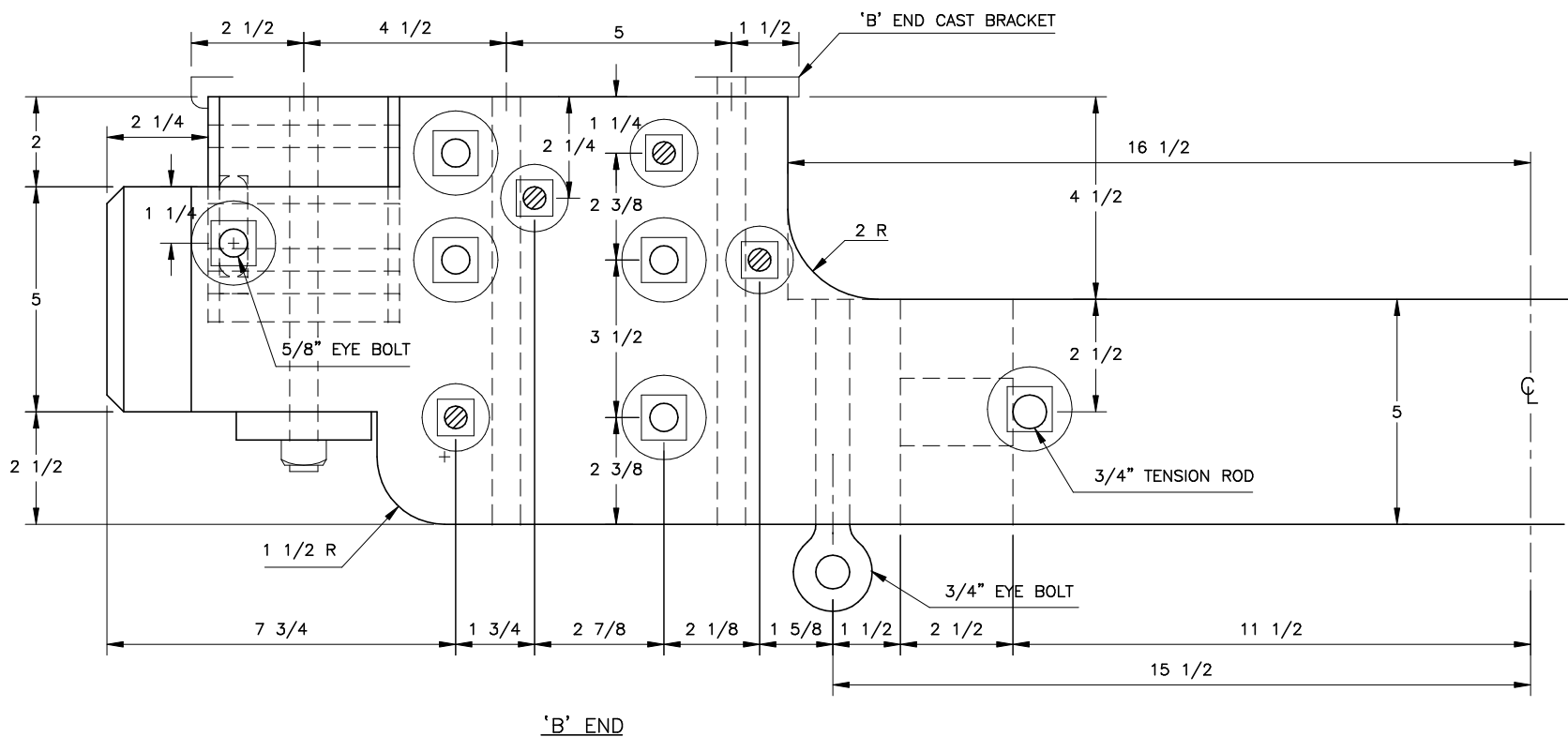
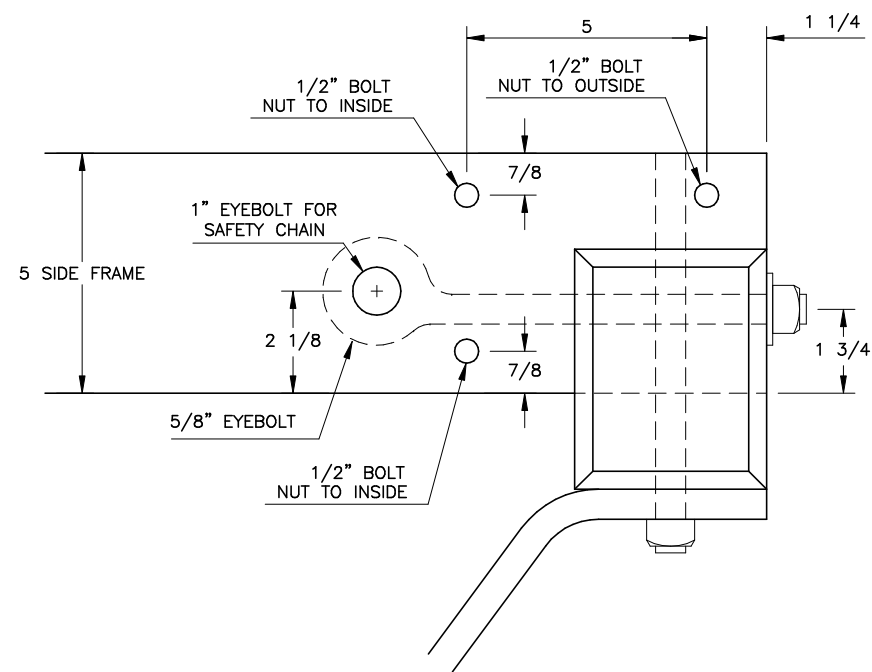
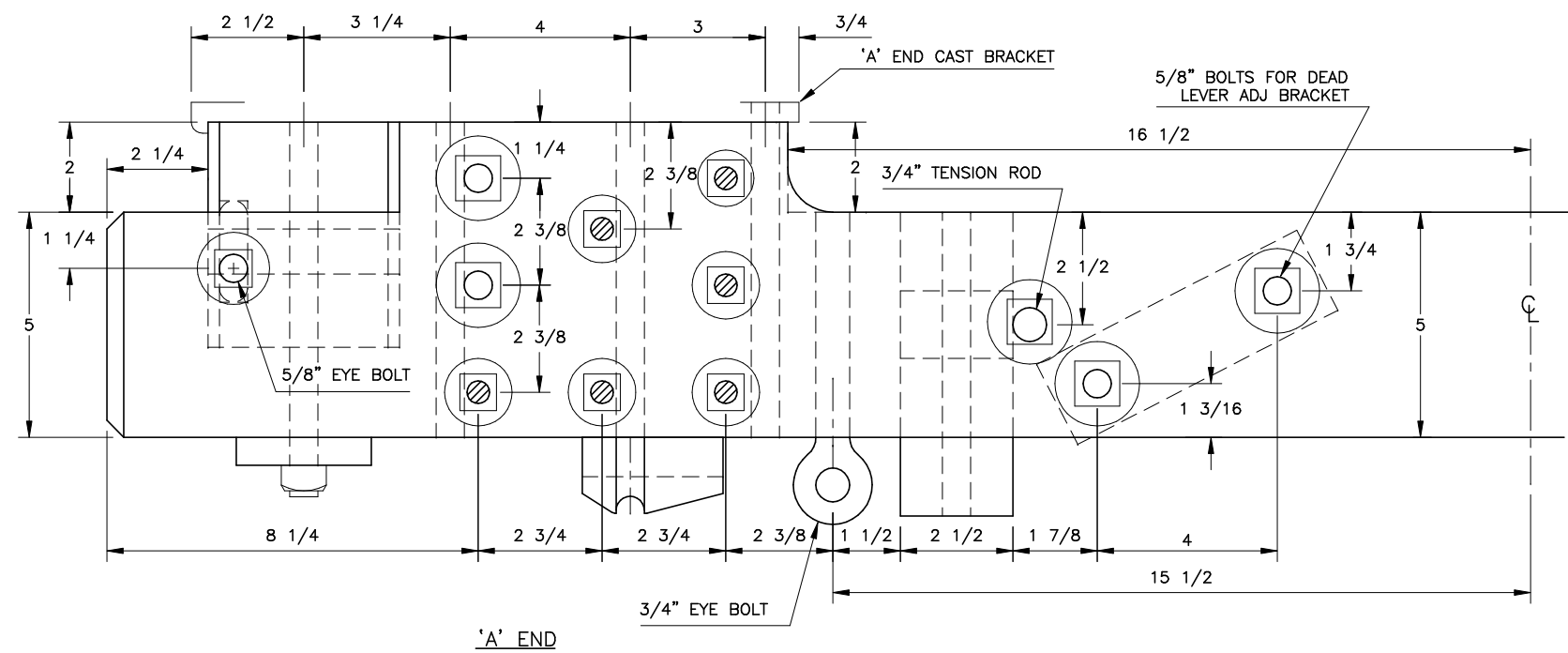




SPREADER BARS
2 REQ'D PER TRUCK



Data Compiled by Jeff Smith, Drawing by Jim Schmidt

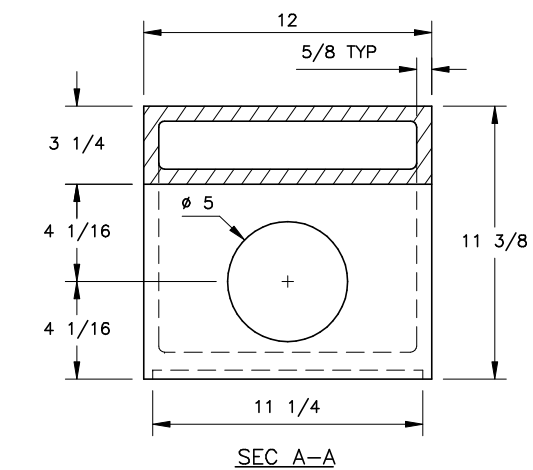
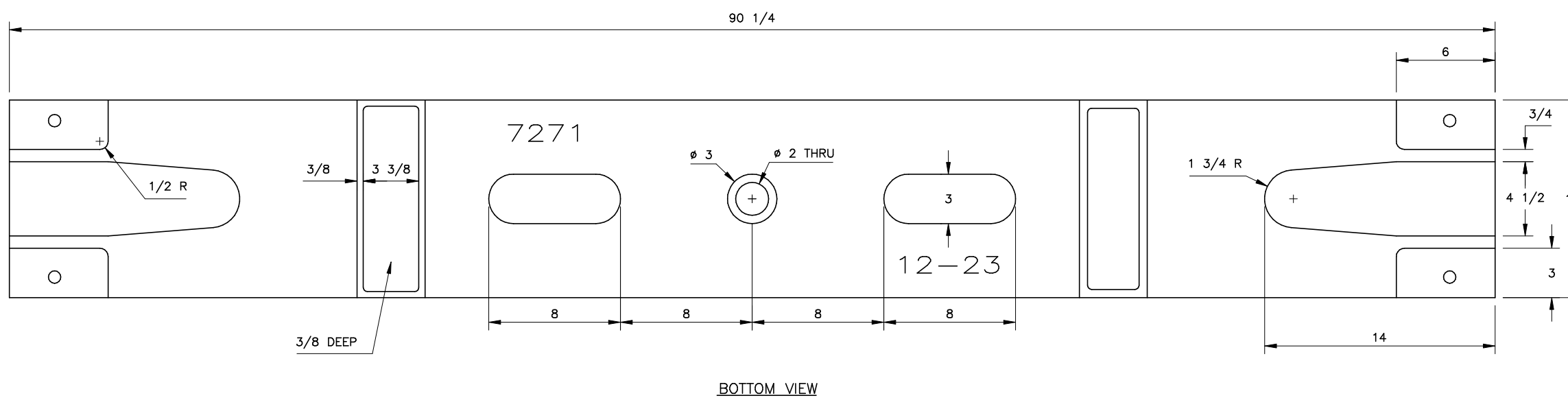
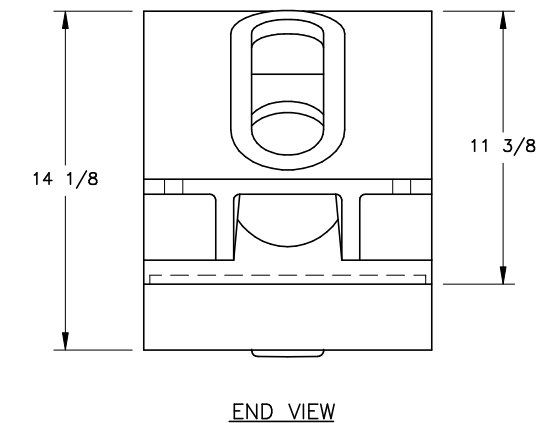
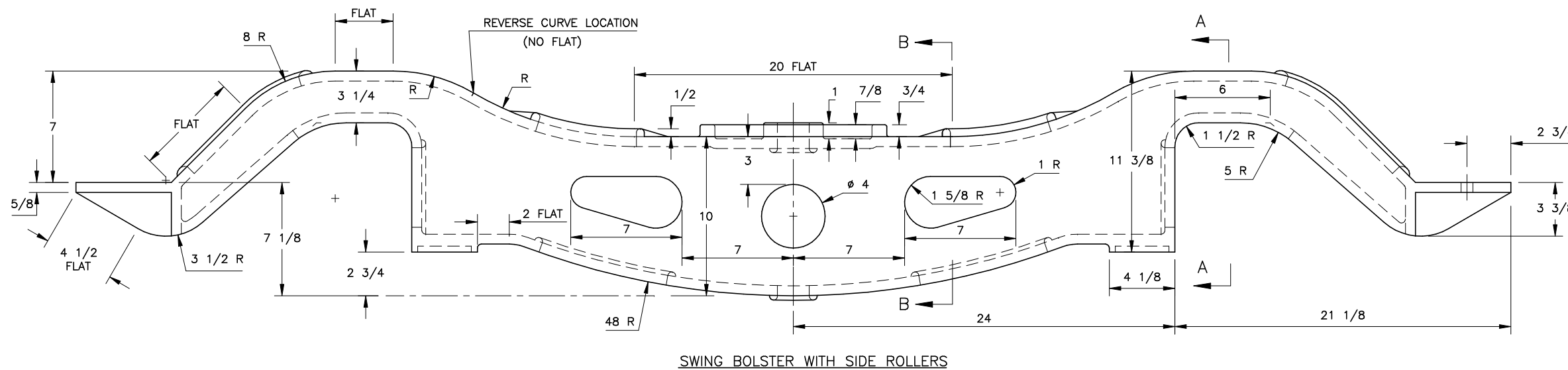
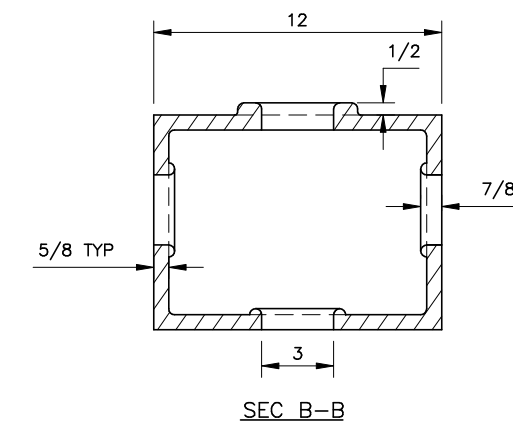
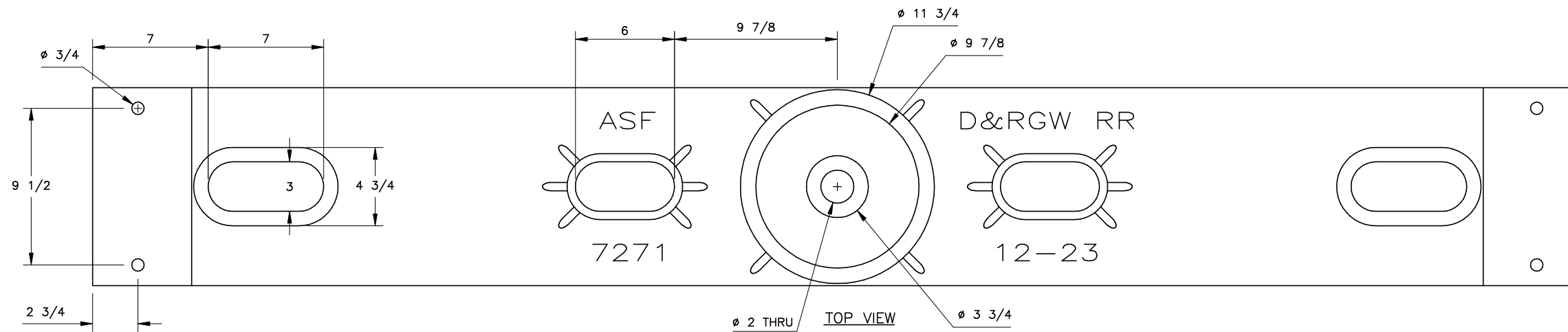
D&RGW PASSENGER TRUCKS	
PEDESTAL STRAPS	
PROTOTYPE	1 1/2" = 1'
File: PTK\ 10ptPEDSTRAP	Rev: 1-20-2017



-  1/2" BOLT
-  5/8" BOLT (UNLESS NOTED)

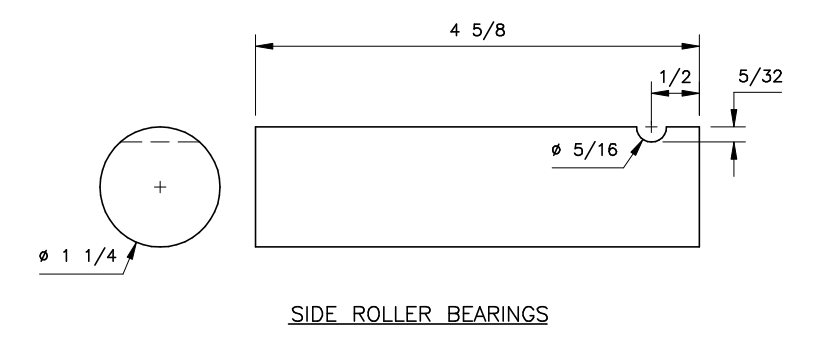
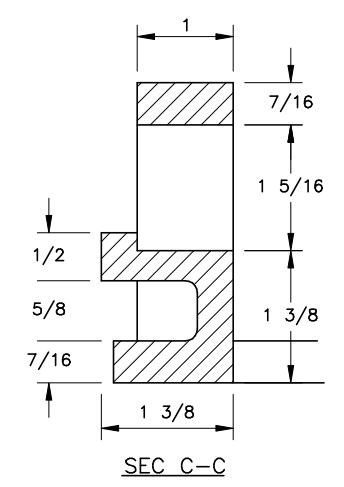
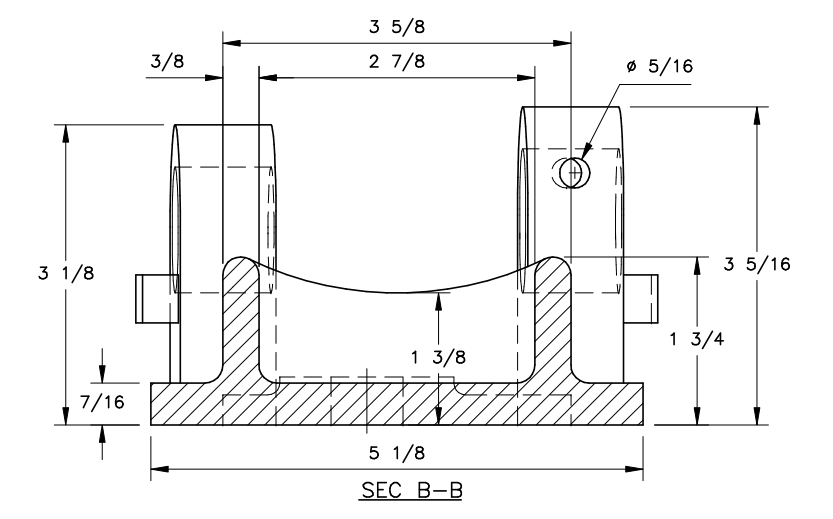
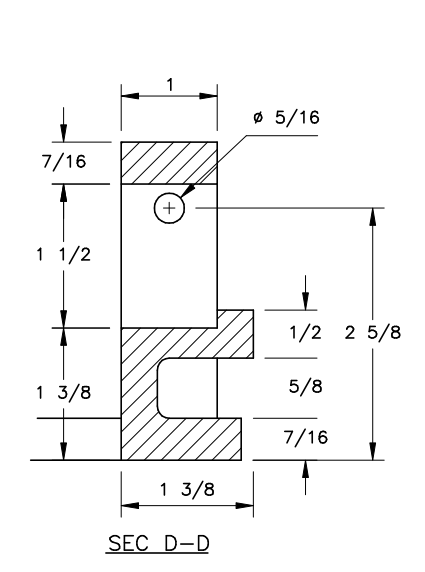
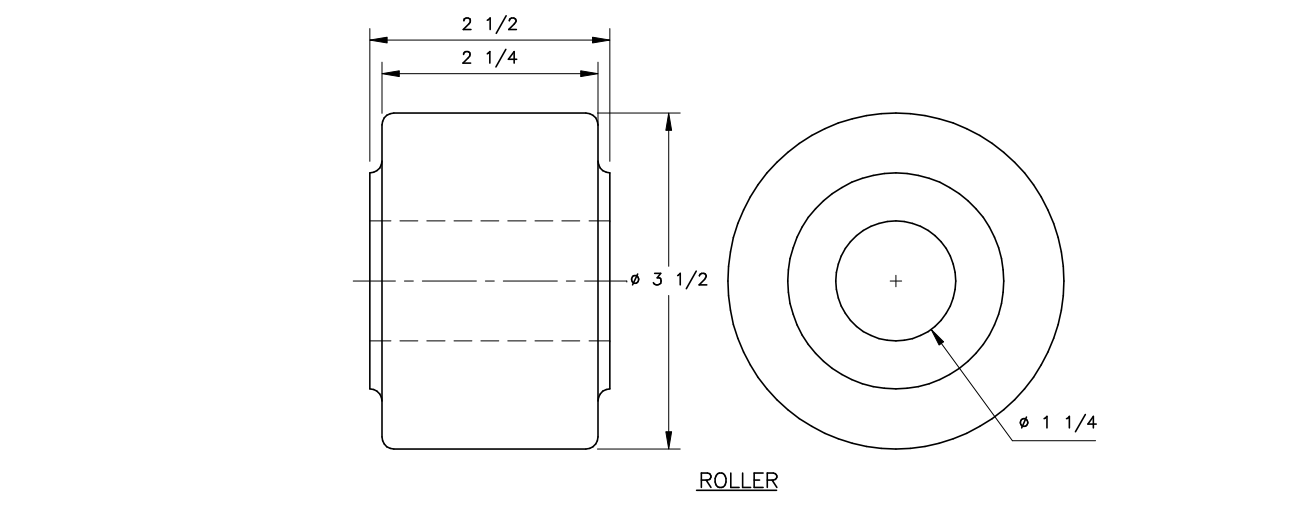
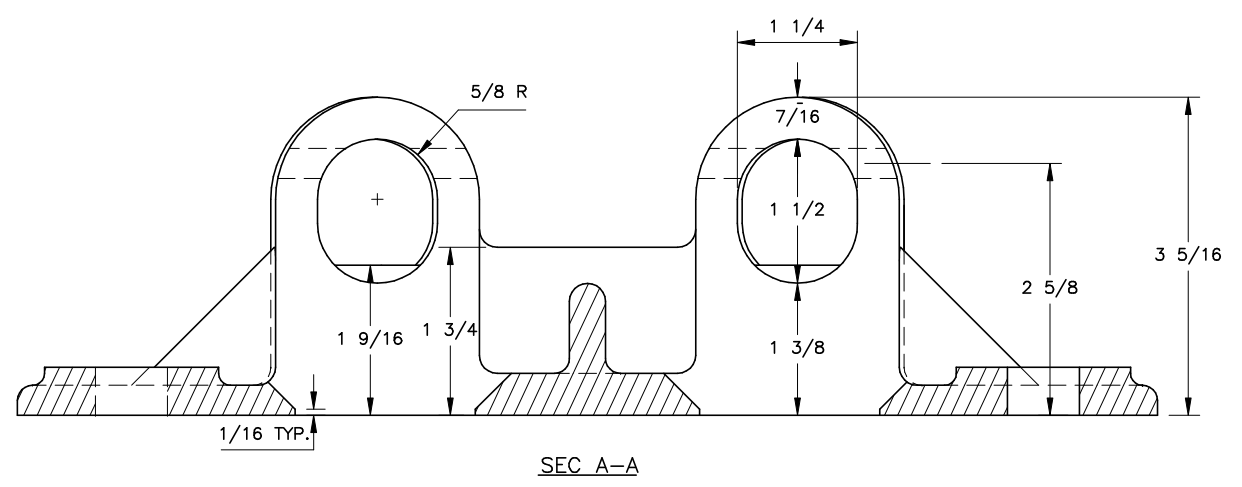
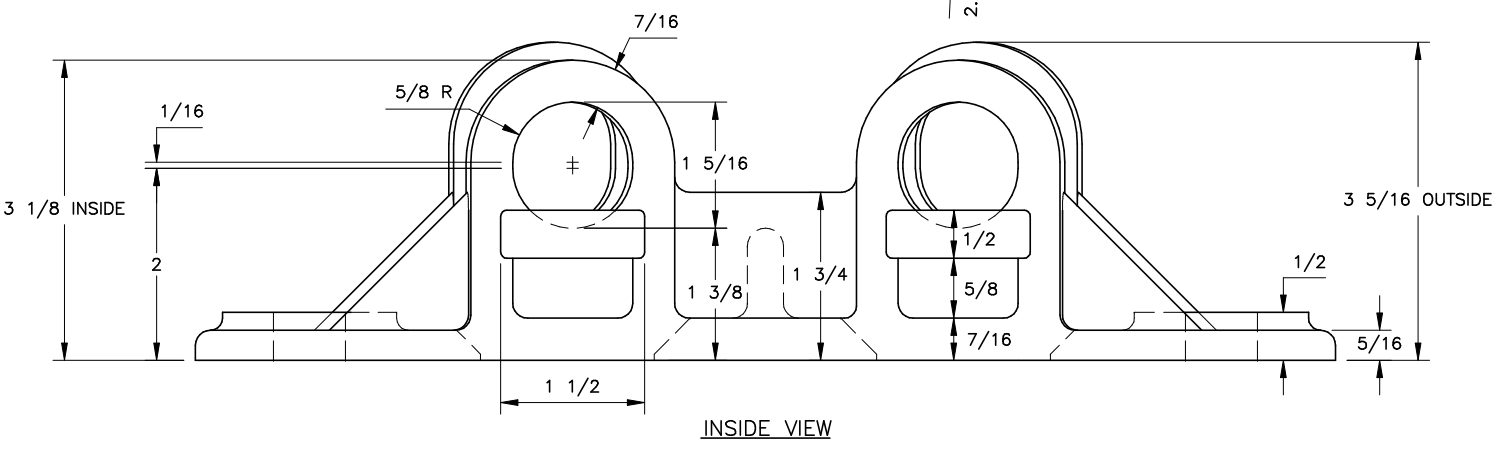
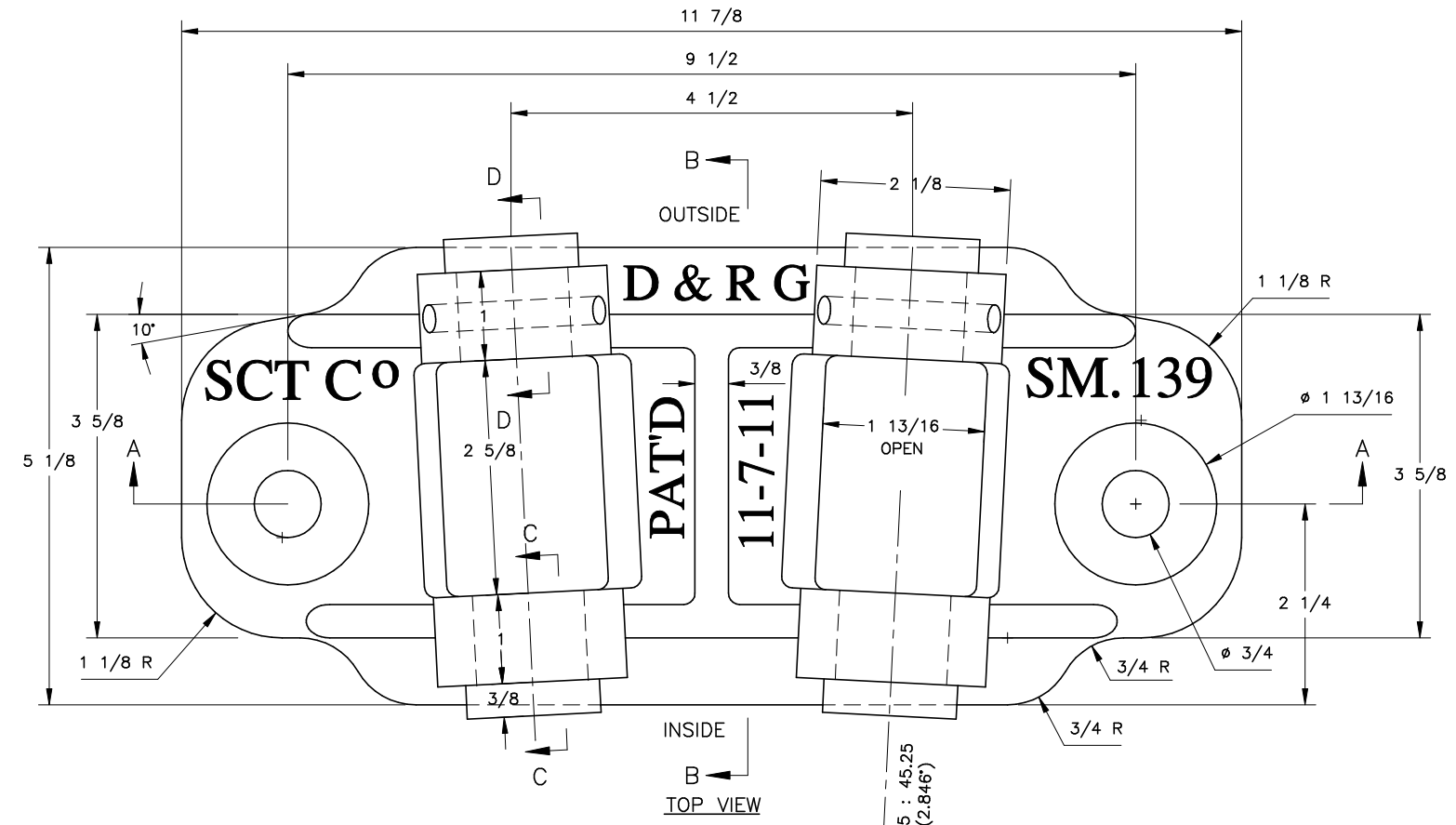
Data Compiled by Jeff Smith, Drawing by Jim Schmidt

D&RGW PASSENGER TRUCKS	
END BOLT LOCATIONS	
PROTOTYPE	3" = 1'
File: PTK\ 11ptENDBOLTS	Rev: 1-15-2017



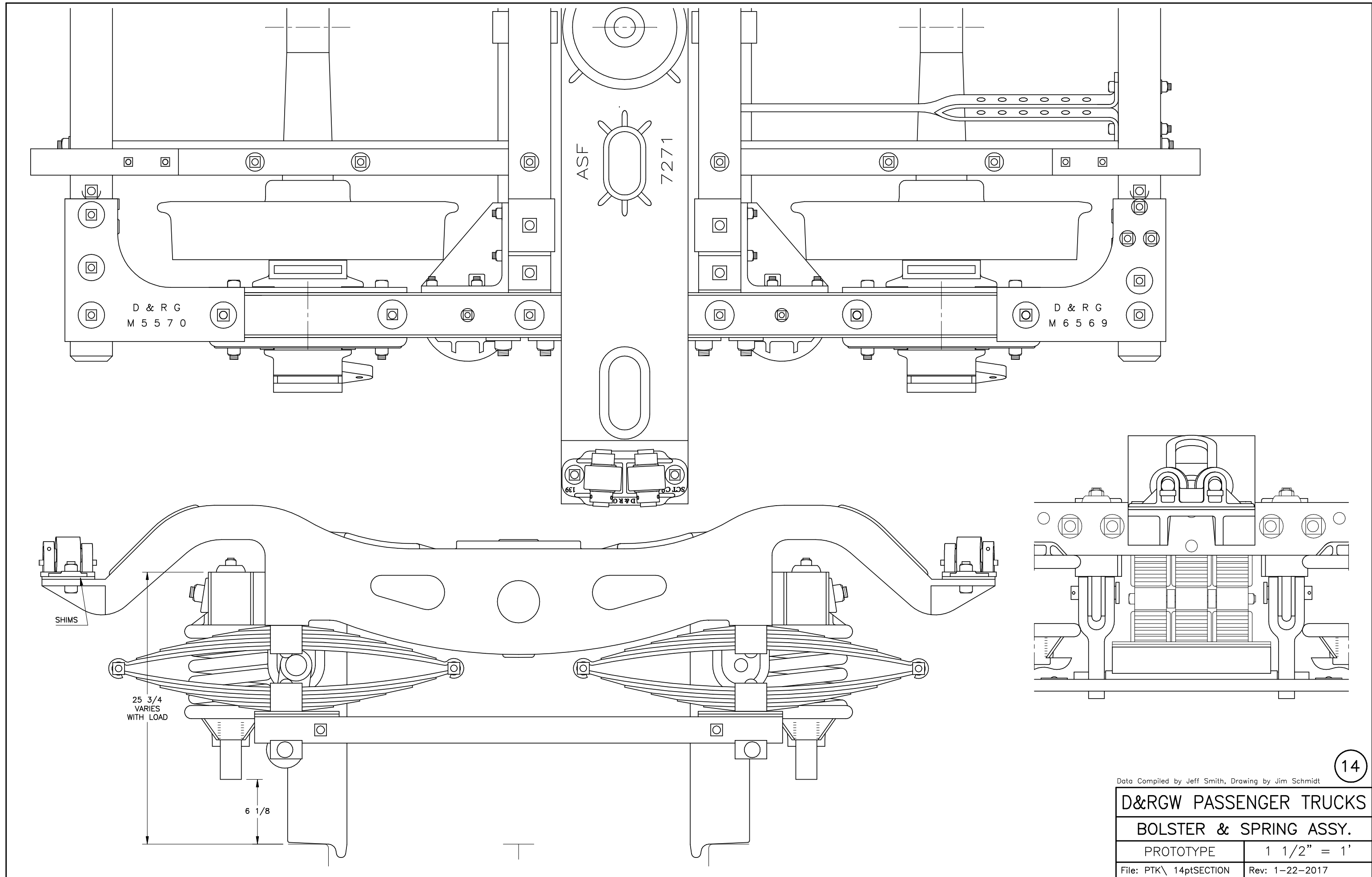
Data Compiled by Jeff Smith, Drawing by Jim Schmidt

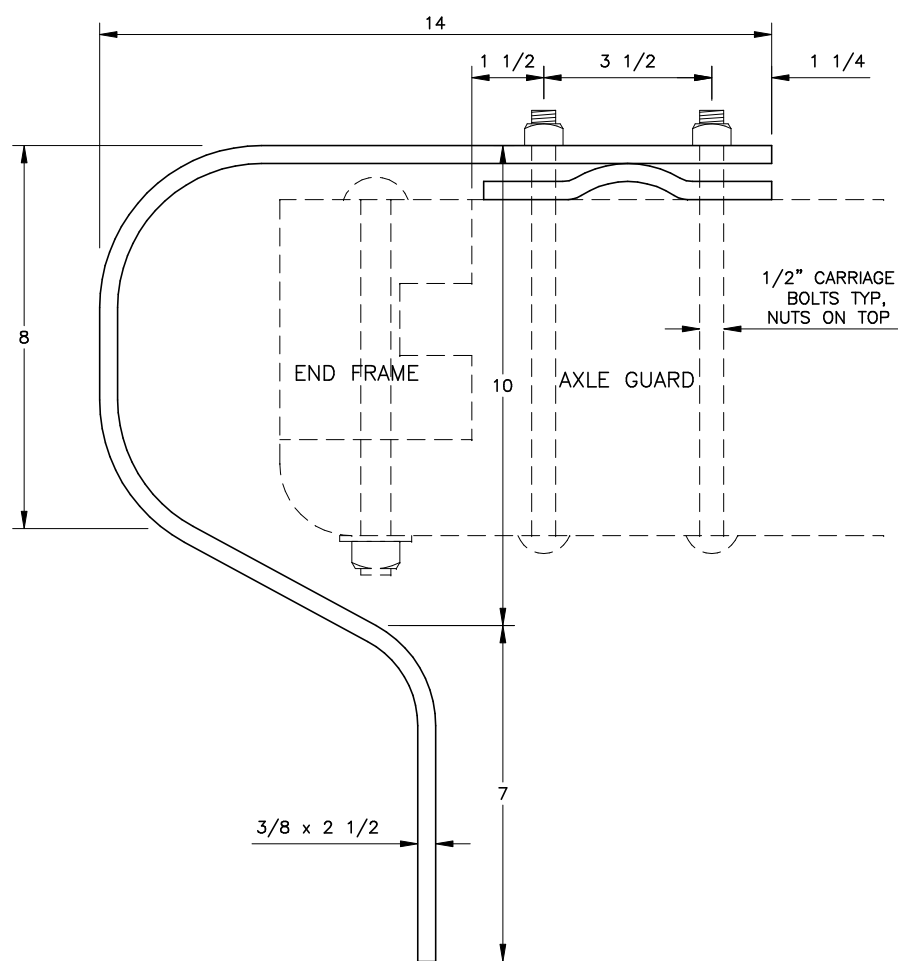
D&RGW PASSENGER TRUCKS	
SWING BOLSTER W/ ROLLERS	
PROTOTYPE	1 1/2" = 1'
File: PTK\ 12ptBOLSTER	Rev: 1-12-2017



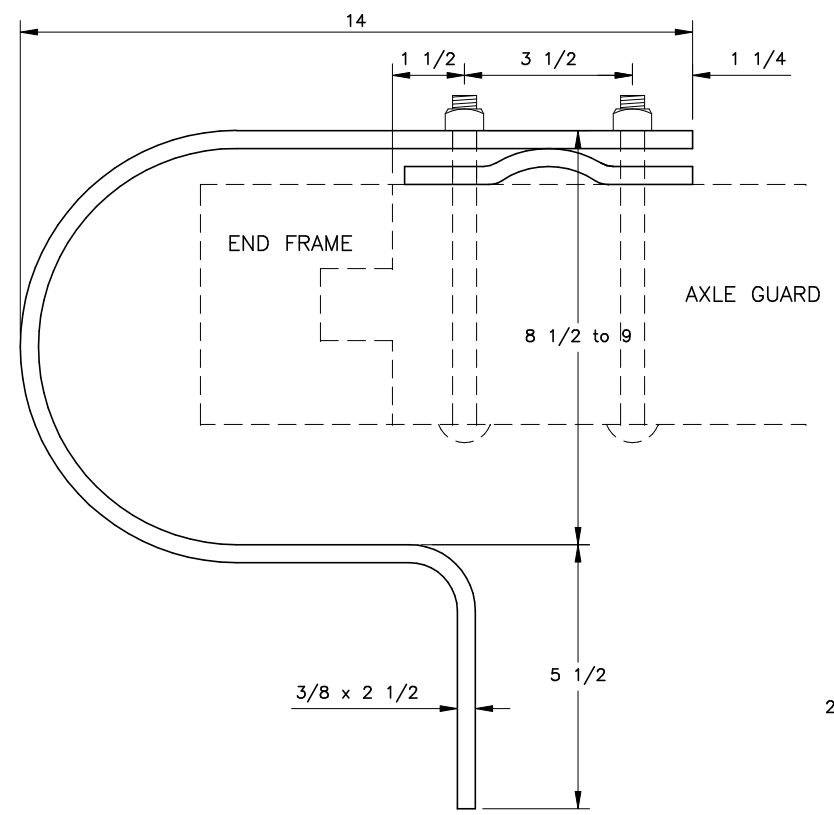
Data Compiled by Jeff Smith, Drawing by Jim Schmidt

D&RGW PASSENGER TRUCKS	
ROLLER BEARINGS	
PROTOTYPE	6" = 1'
File: PTK\ 13ptROLLBRG	Rev: 1-6-2017

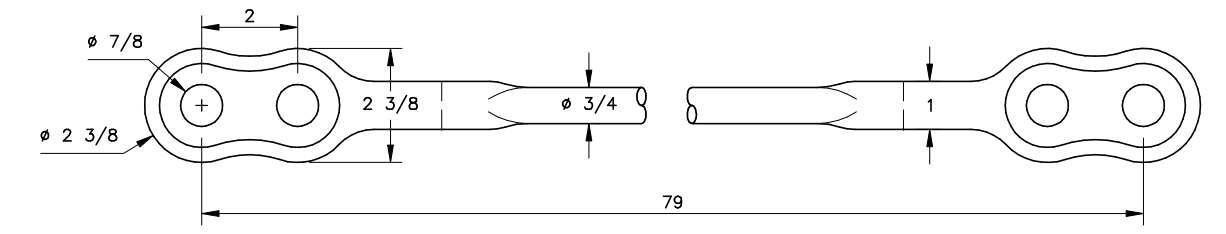
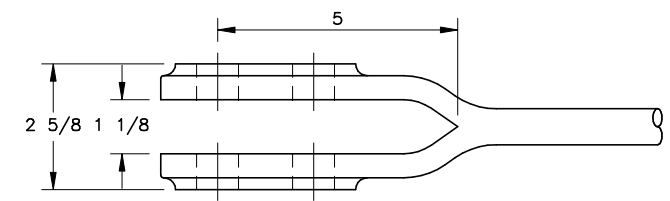
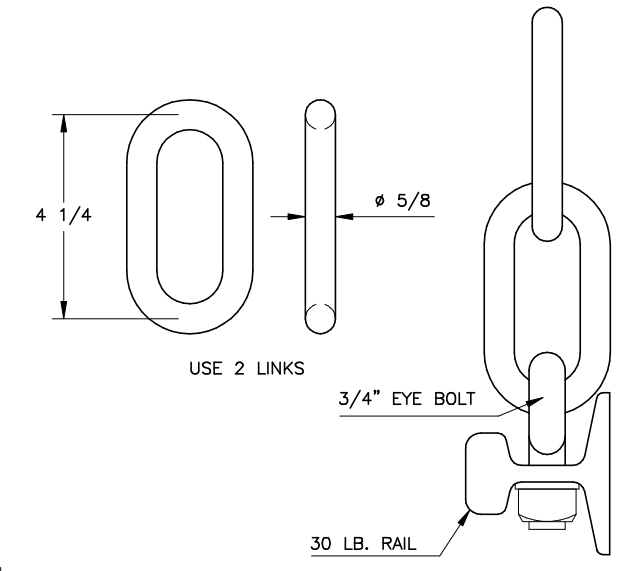




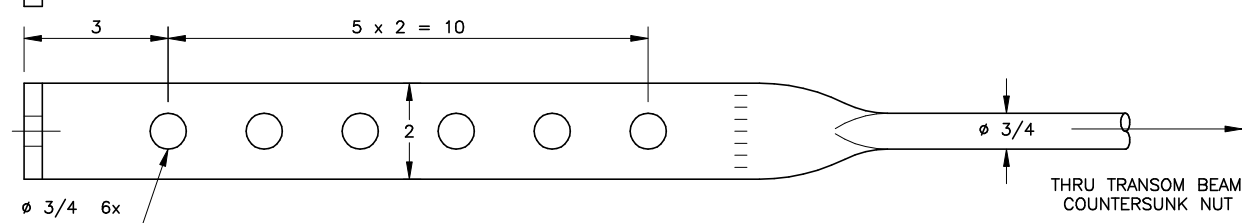
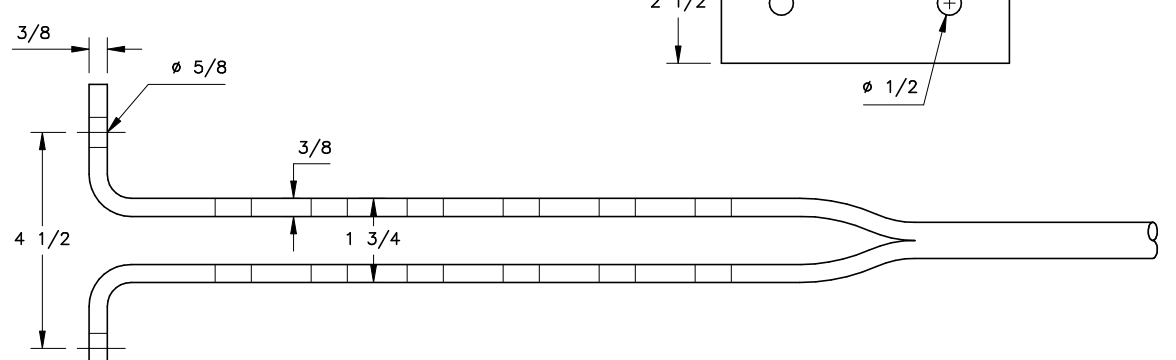
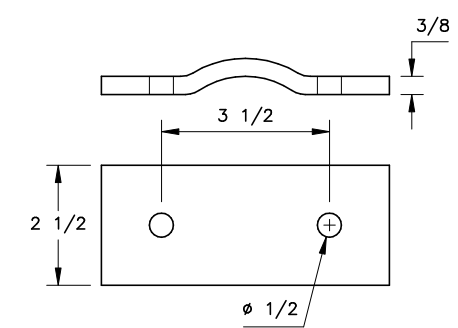
'A' END BRAKE BEAM RETURN SPRING



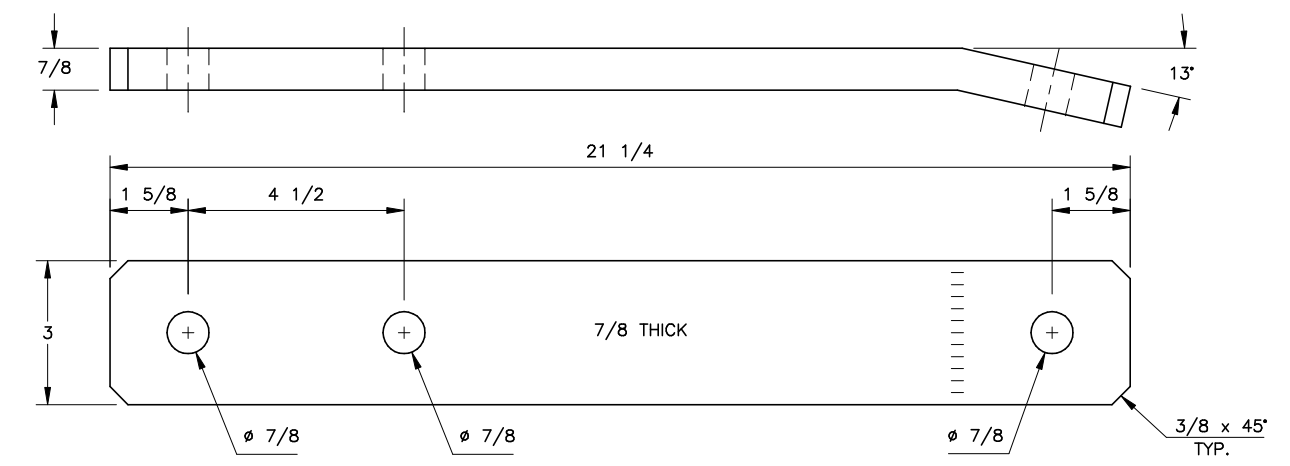
'B' END BRAKE BEAM RETURN SPRING



TRUCK BRAKE ROD



'A' END DEAD LEVER ADJUSTING BRACKET

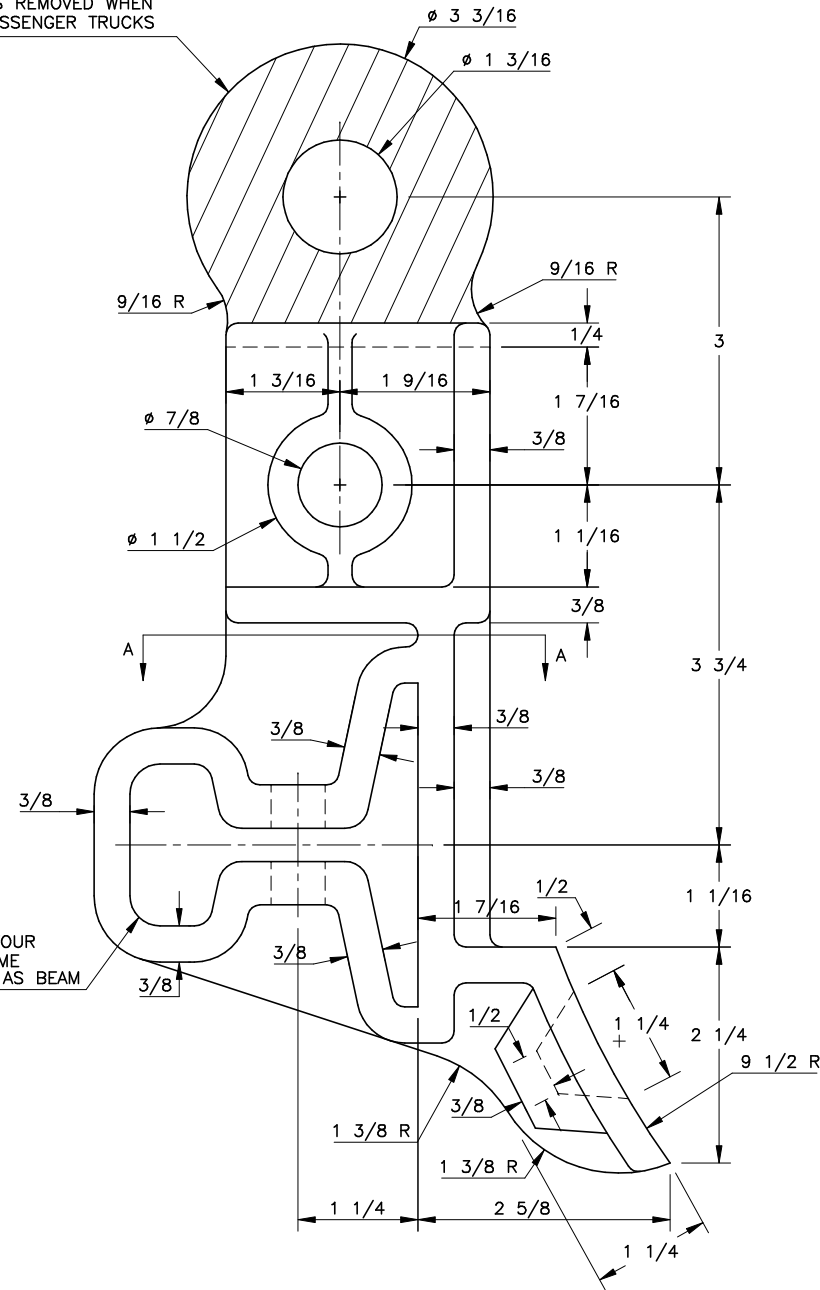


DEAD LEVER
1 REQ'D PER TRUCK

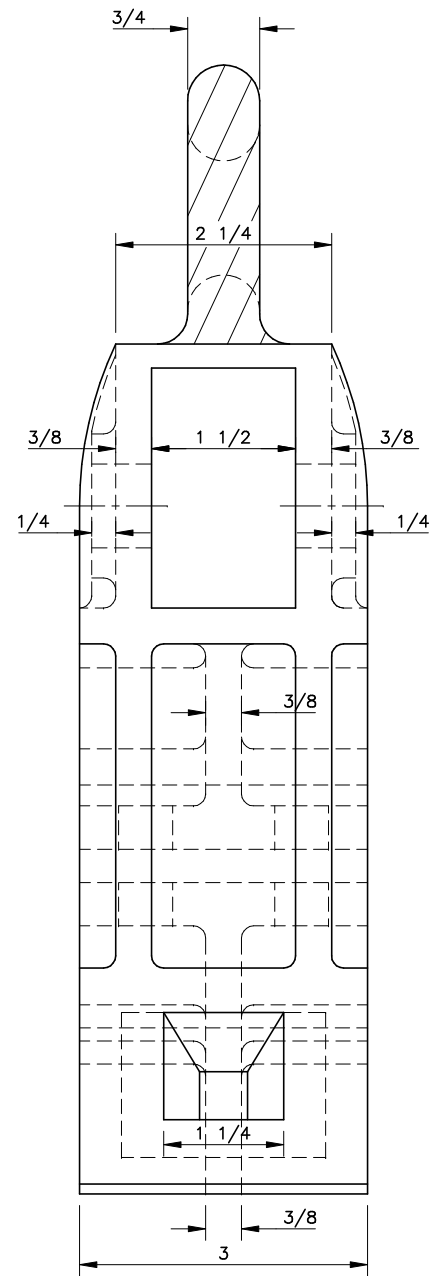
Data Compiled by Jeff Smith, Drawing by Jim Schmidt

D&RGW PASSENGER TRUCKS	
BRAKE LEVERS	
PROTOTYPE	3" = 1'
File: PTK\ 15ptBKLEV	Rev: 1-16-2017

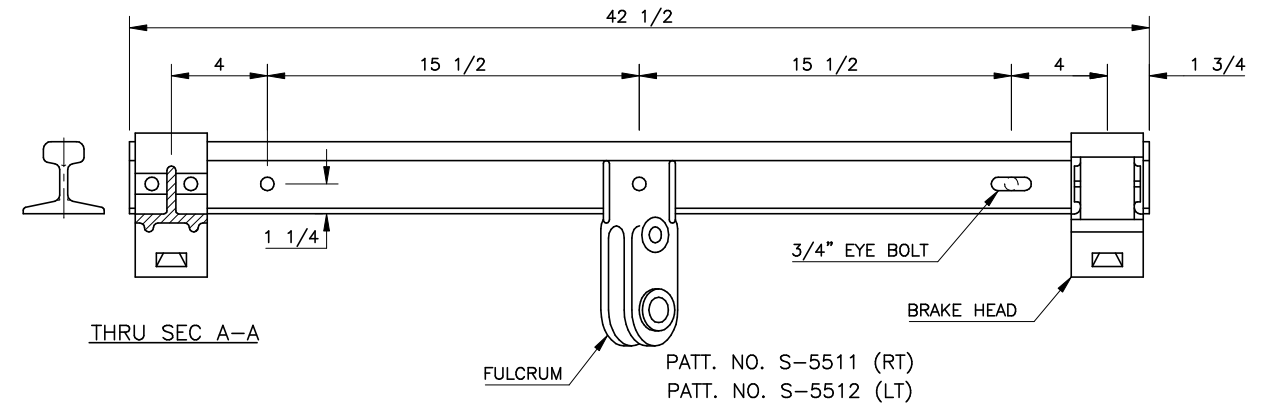
TOP LOOP IS REMOVED WHEN USED ON PASSENGER TRUCKS



INSIDE CONTOUR TO HAVE SAME DIMENSIONS AS BEAM



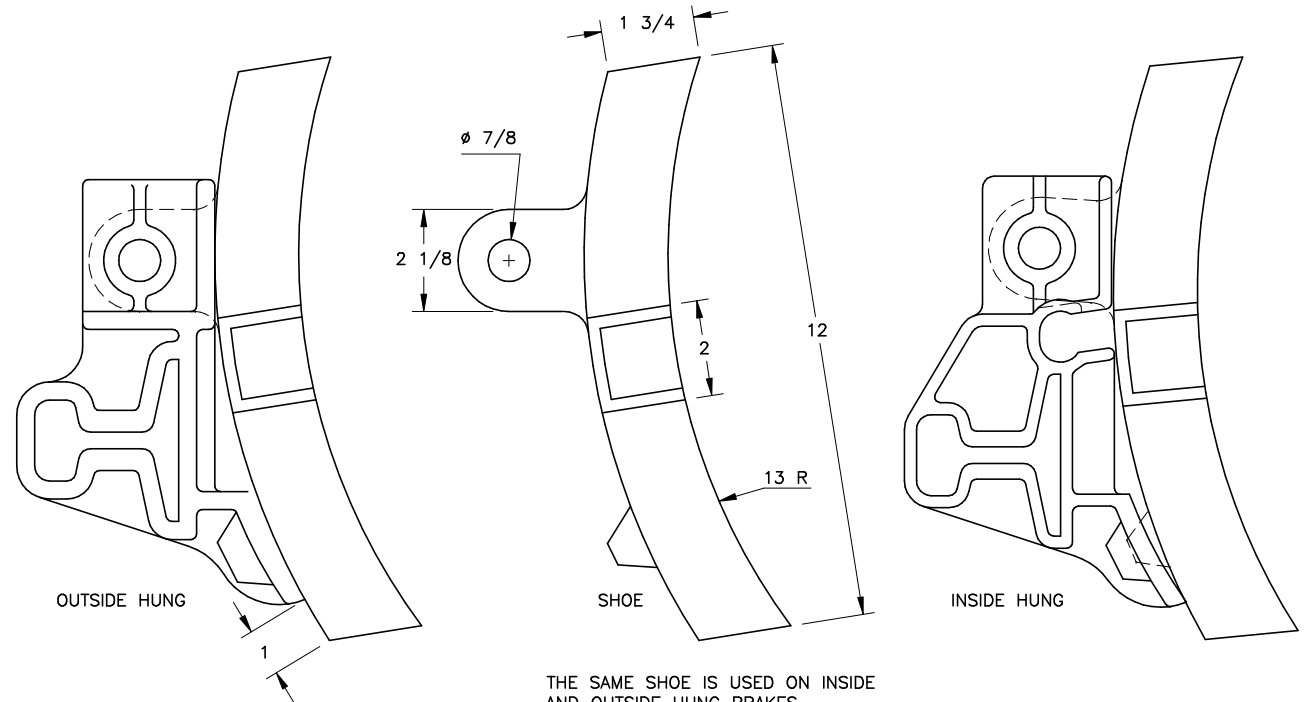
BRAKE HEAD
PATT. NO. S-5510



THRU SEC A-A

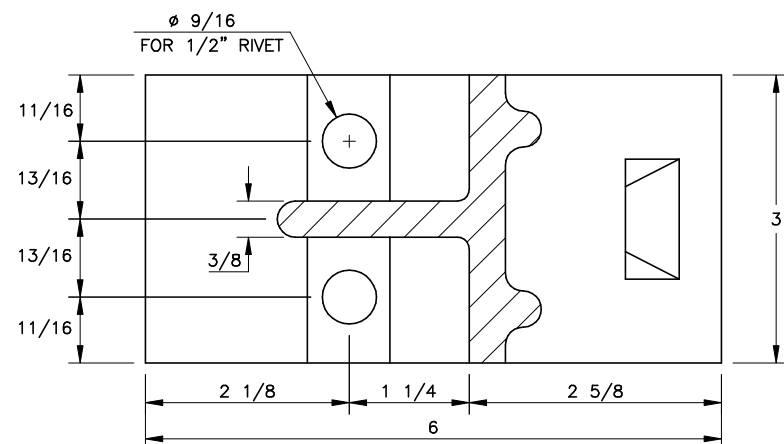
PATT. NO. S-5511 (RT)
PATT. NO. S-5512 (LT)

TOP VIEW - BRAKE BEAM ASSEMBLY

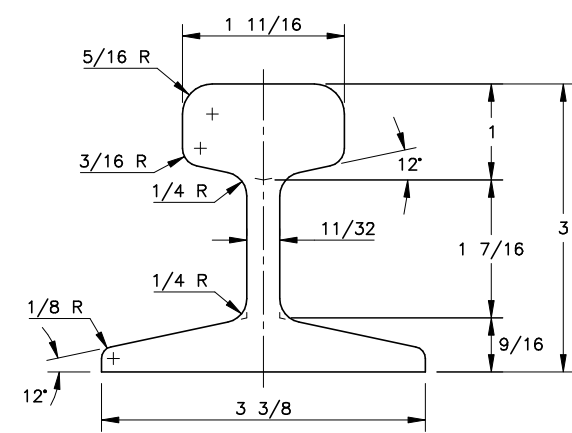


BRAKE HEAD AND SHOE
SHOE 3" WIDE

THE SAME SHOE IS USED ON INSIDE AND OUTSIDE HUNG BRAKES
BOTH INSIDE AND OUTSIDE HUNG BRAKE HEADS ARE FOUND ON PASSENGER TRUCKS



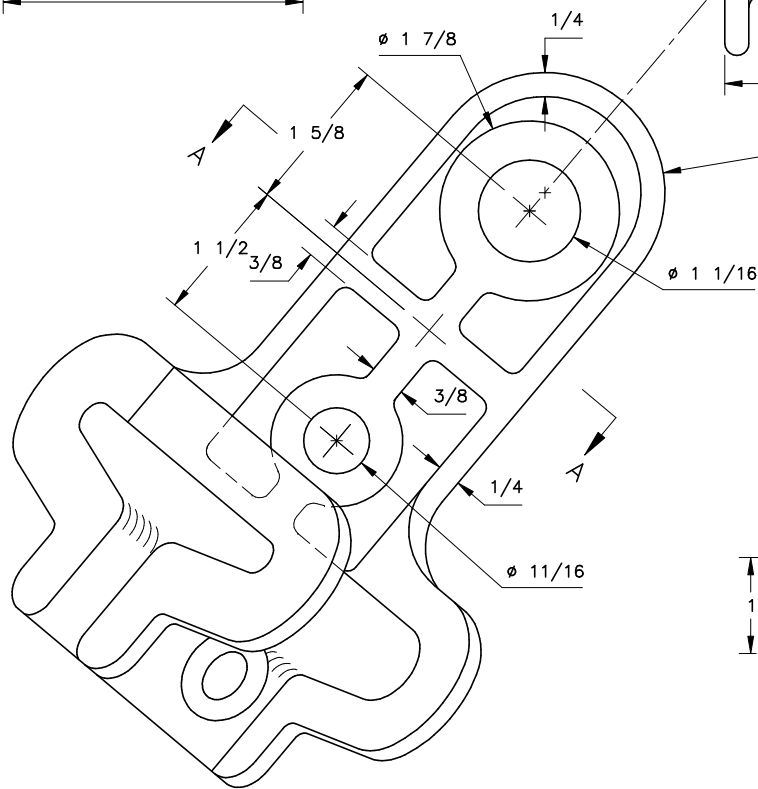
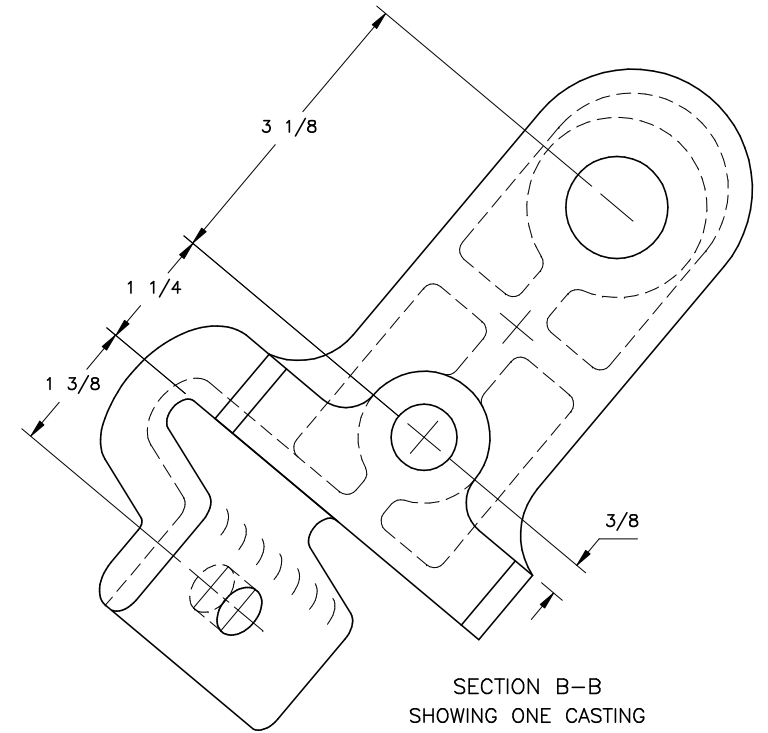
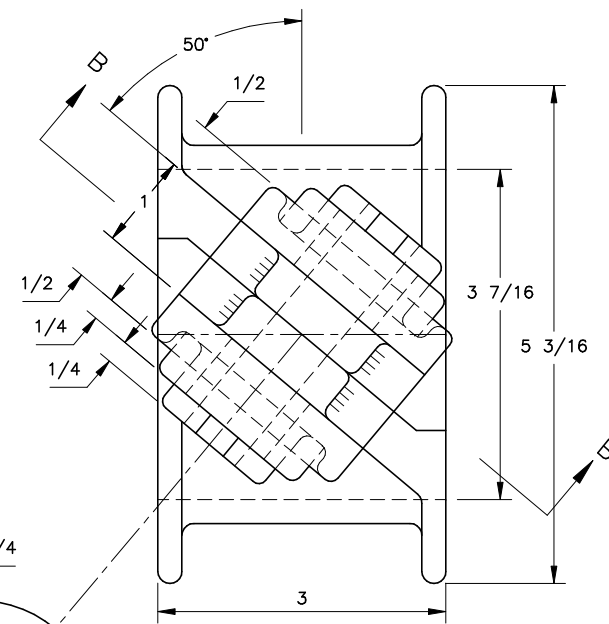
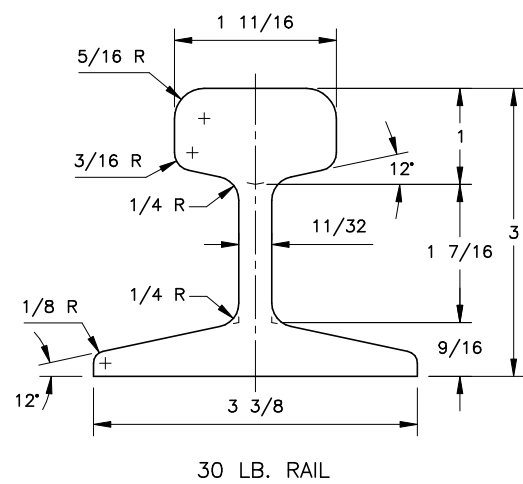
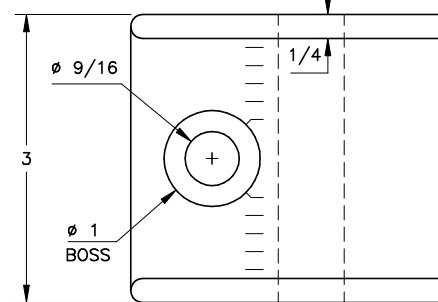
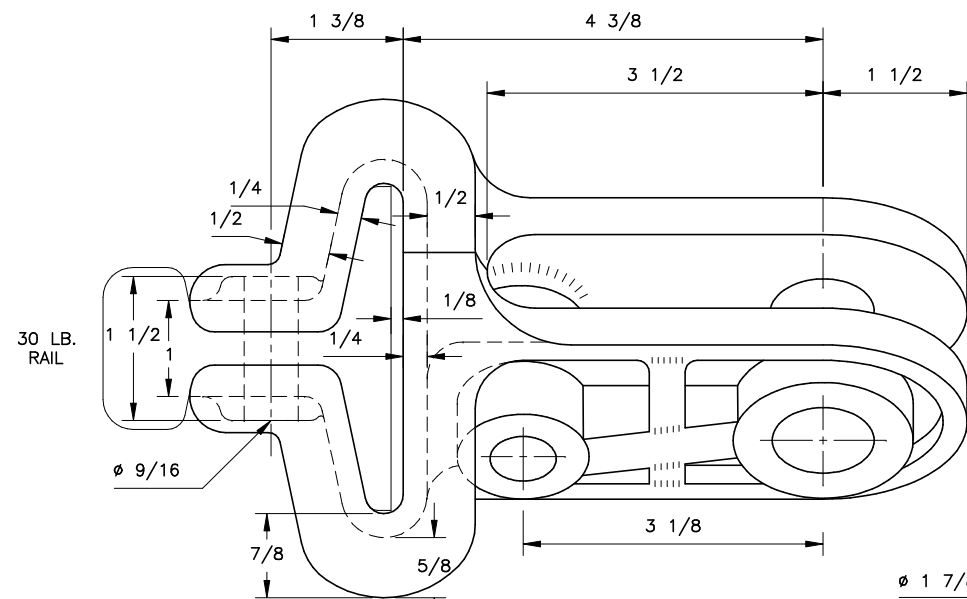
SECTION A-A



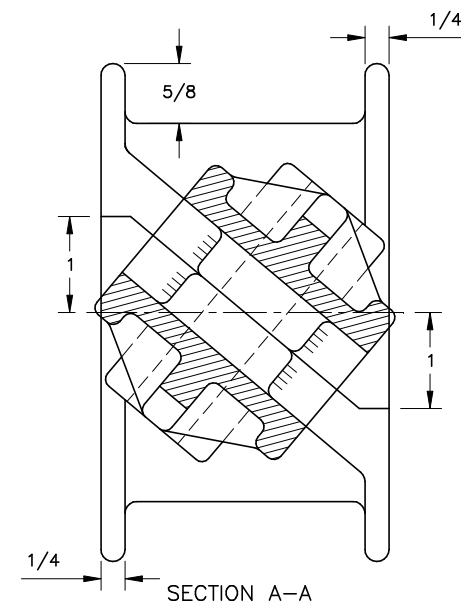
BEAM (30 LB RAIL)

Data Compiled by Jeff Smith, Drawing by Jim Schmidt

D&RGW PASSENGER TRUCKS	
BRAKE HEAD (OUTSIDE HUNG)	
PROTOTYPE	6" = 1'
File: PTK\ 16ptBRKHD	Rev: 1-8-2017



2 LEFT CASTINGS ASSEMBLED
2 LEFT CASTINGS OR 2
RIGHT CASTINGS PER BEAM



NOT ALL HIDDEN LINES ARE SHOWN FOR CLARITY.

MOST CORNERS ON THESE CASTINGS WOULD BE ROUNDED OR FILLETS. THE CORNERS ARE DRAWN SQUARE TO BETTER SHOW THE LIMITS OF THE PART.

PATT. NO. S-5511 (RT)
PATT. NO. S-5512 (LT)

Data Compiled by Jeff Smith, Drawing by Jim Schmidt

D&RGW PASSENGER TRUCKS

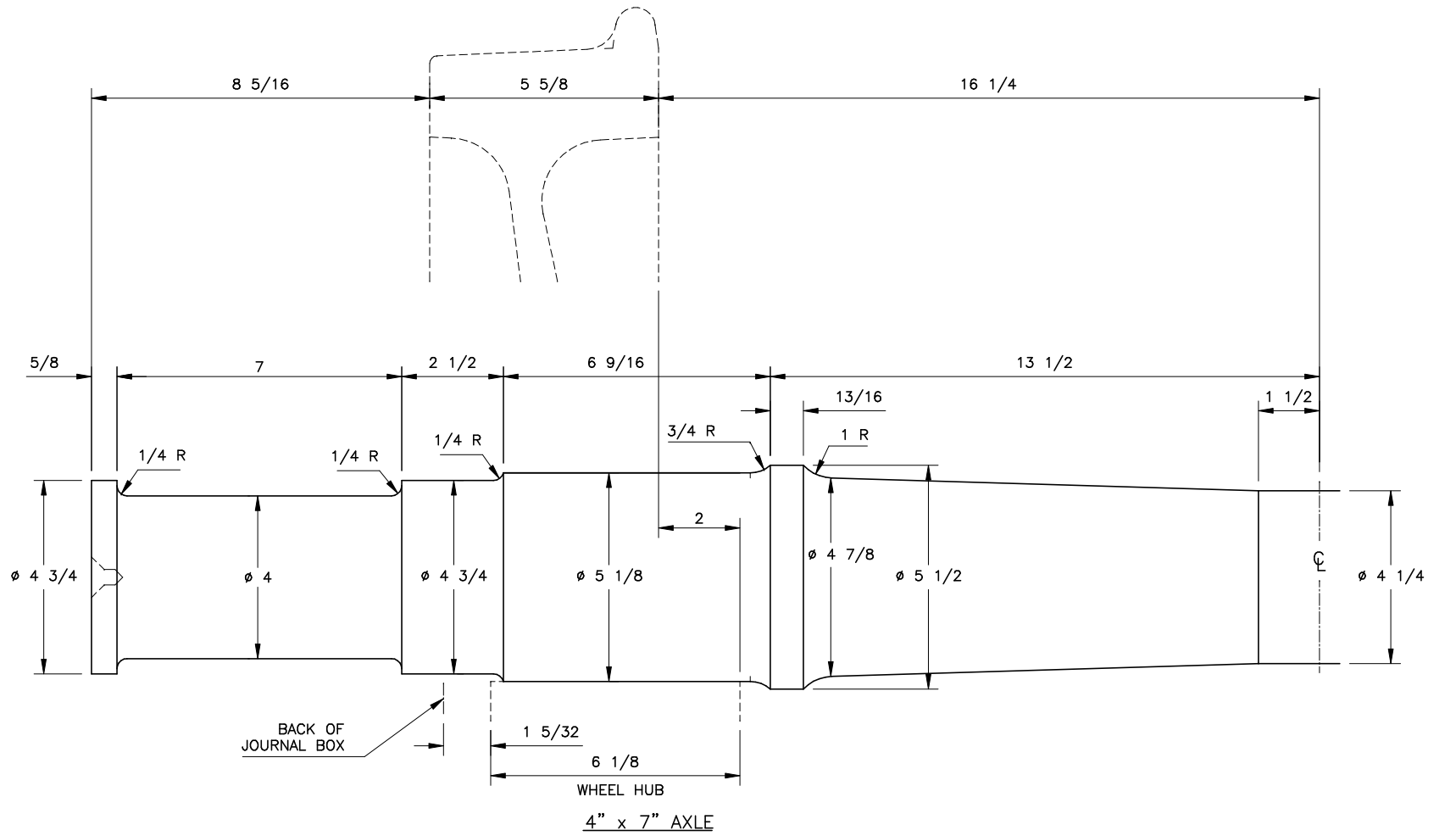
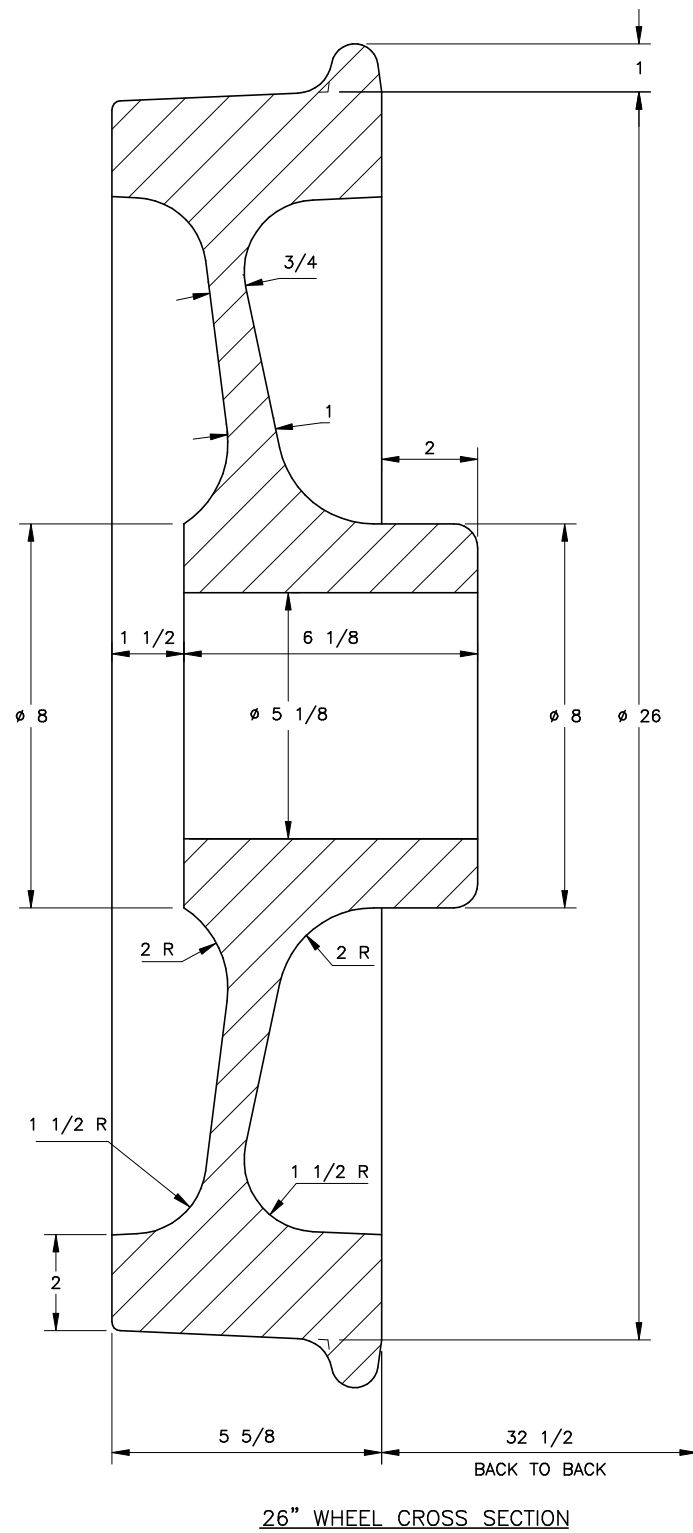
BRAKE BEAM FULCRUM

PROTOTYPE

6" = 1'

File: PTK\ 17ptBKBMFL

Rev: 1-2-2017



DENVER GRIFFIN WHEELS USED ON D&RGW PASSENGER TRUCKS WERE MADE BY THE GRIFFIN WHEEL COMPANY LOCATED IN DENVER, COLORADO.

WHEELS HAVE EITHER SEVEN OR NINE RIBS ON BACK.

Data Compiled by Jeff Smith, Drawing by Jim Schmidt

D&RGW PASSENGER TRUCKS	
WHEELS AND AXLES	
PROTOTYPE	3" = 1'
File: PTK\ 18ptWHEELS	Rev: 1-21-2017