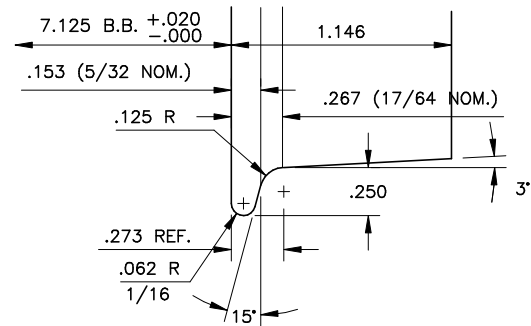
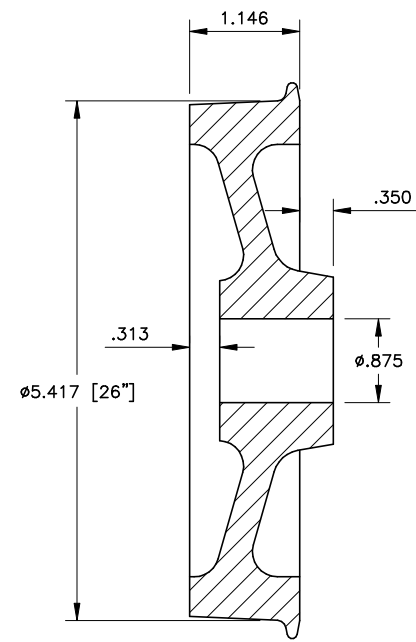


Data Compiled by Jeff Smith, Drawing by Jim Schmidt

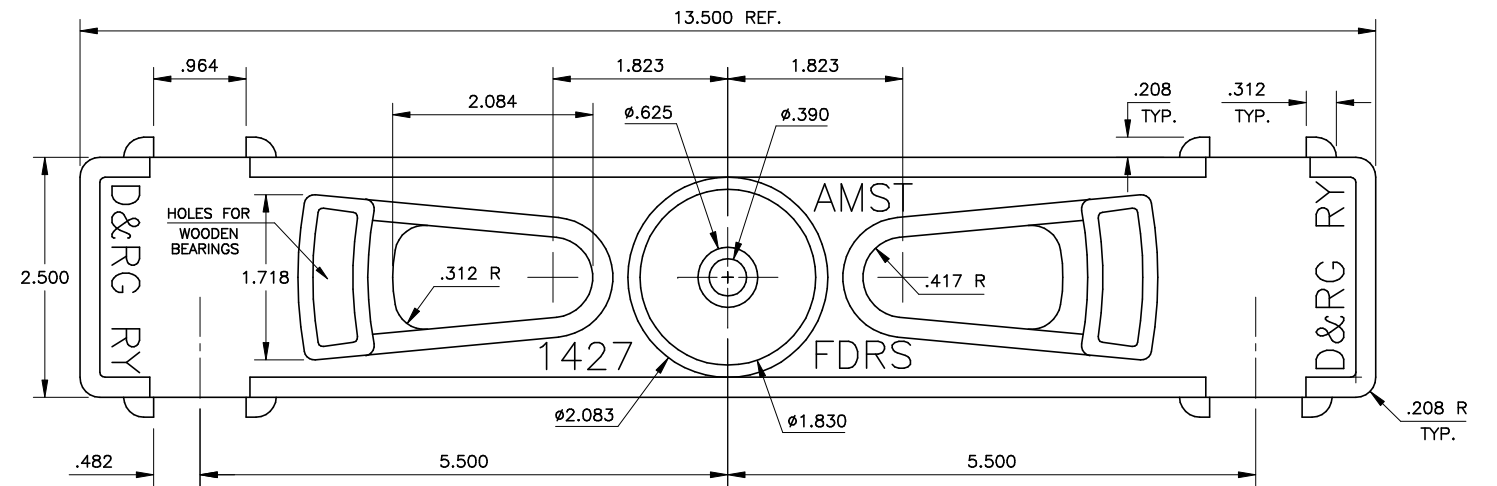
D&RGW 25-TON TRUCKS	
3' 7" ARCH BAR TRUCK	
SIZE VARIES	2 1/2" = 1'
File: ftk1-25ARCHBARS	Rev: 8-6-2017



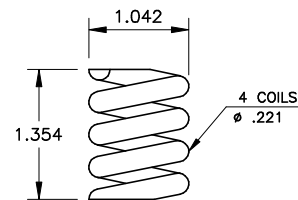
RMI-25 WHEEL STANDARDS

THE FLANGE DETAILS SHOWN FOR RMI25 STANDARD VARY FROM PROTOTYPE TO MEET I.B.L.S. STANDARDS FOR 7 1/2" GAUGE.

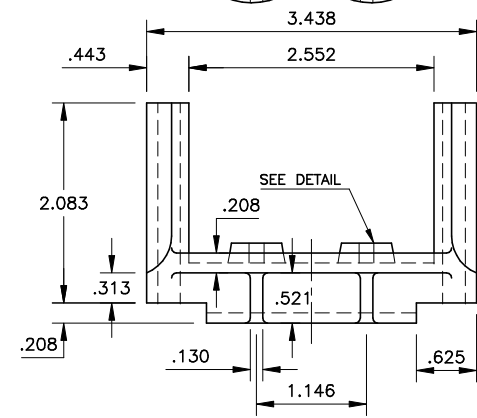
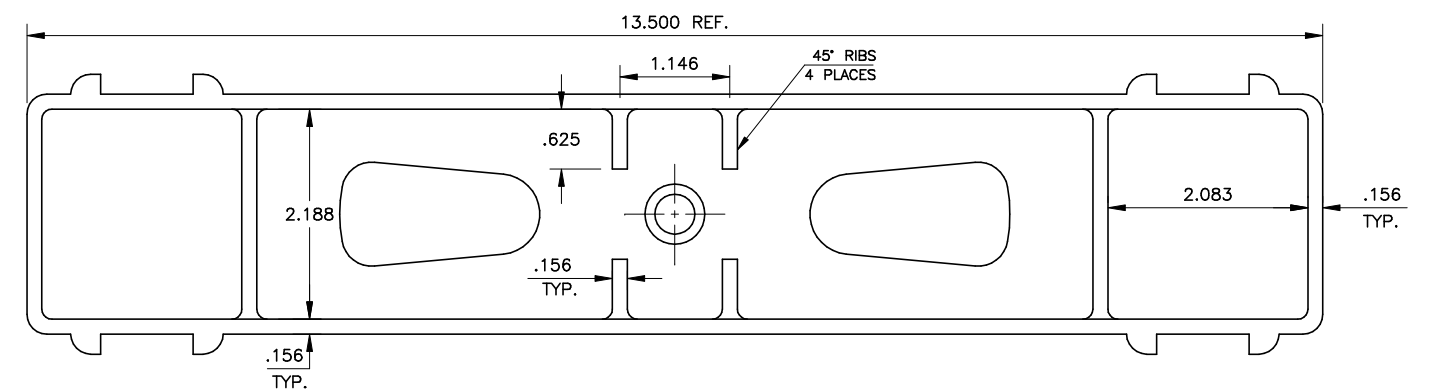
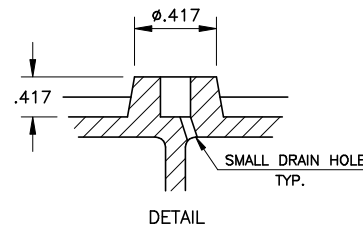
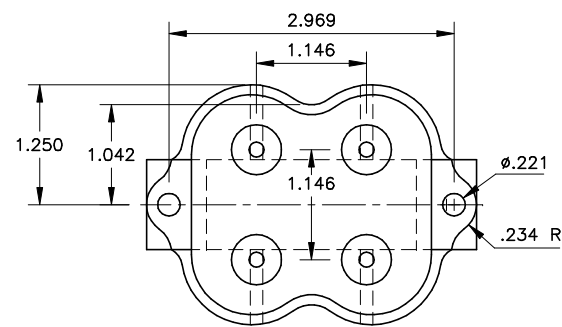
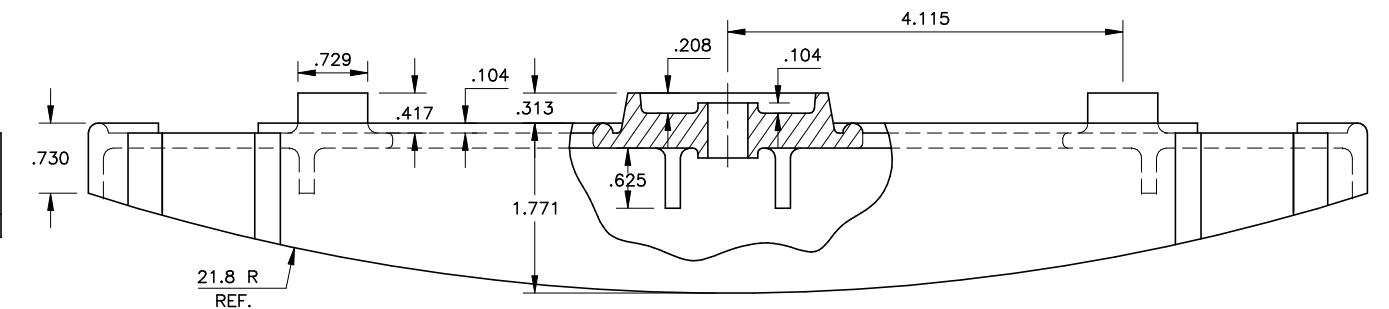
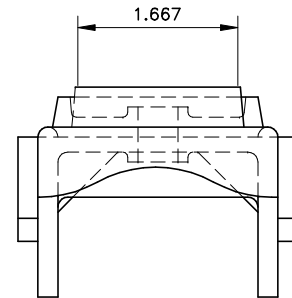
PROTOTYPE ARCHBARS SCALE TO 10.911 C.C. BUT ARE MOVED OUT TO 11.000 C.C. ON MODEL TO MEET I.B.L.S. 7.125 BACK TO BACK REQUIREMENT FOR 7 1/2" GAUGE TRACK.



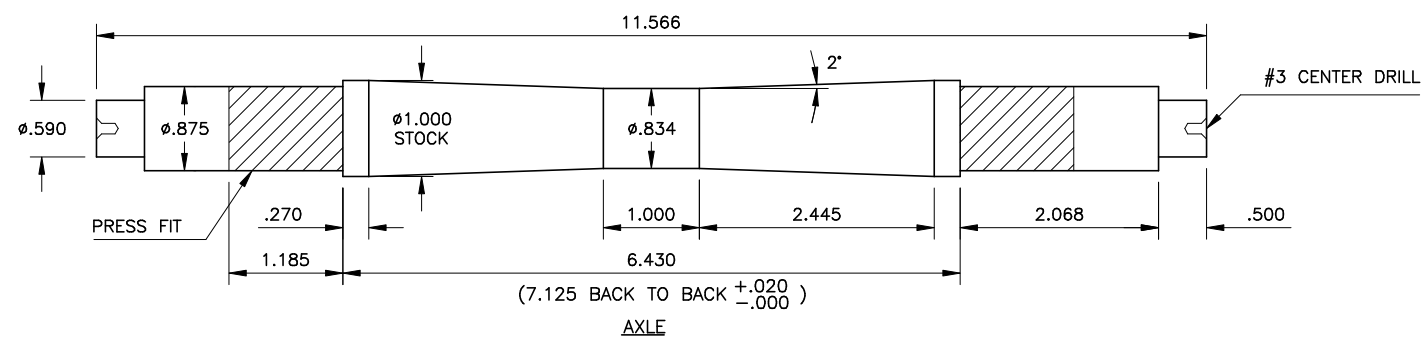
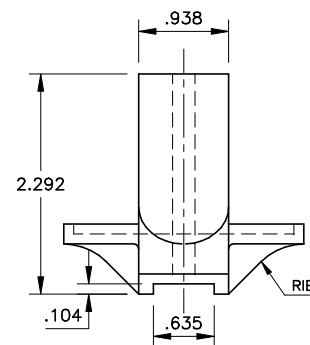
WHEELS
ROLL MODEL INC.
RIB BACK 5 1/2" WHEEL



SPRINGS
16 REQ'D



SPRING SEAT - COLUMN POST



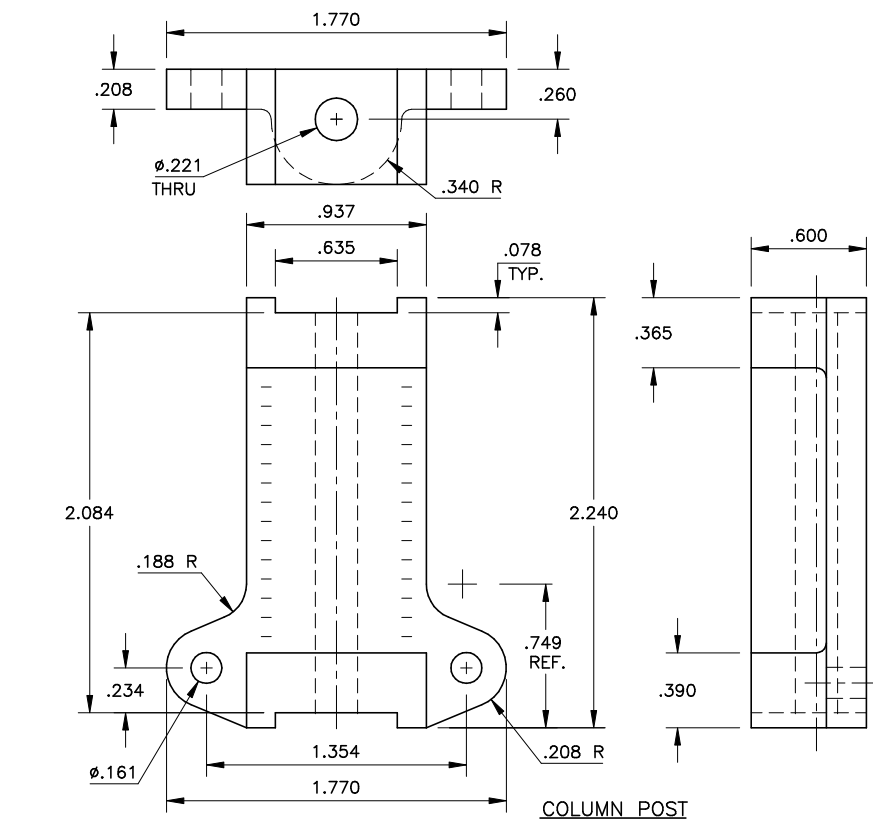
Data Compiled by Jeff Smith, Drawing by Jim Schmidt

D&RGW 25-TON TRUCKS

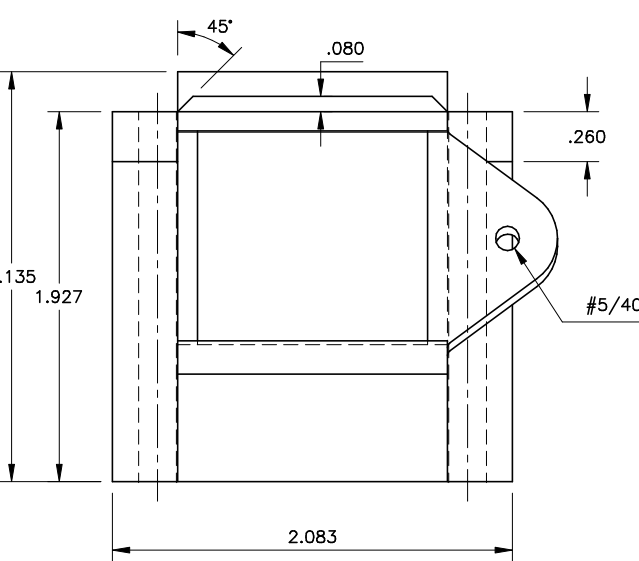
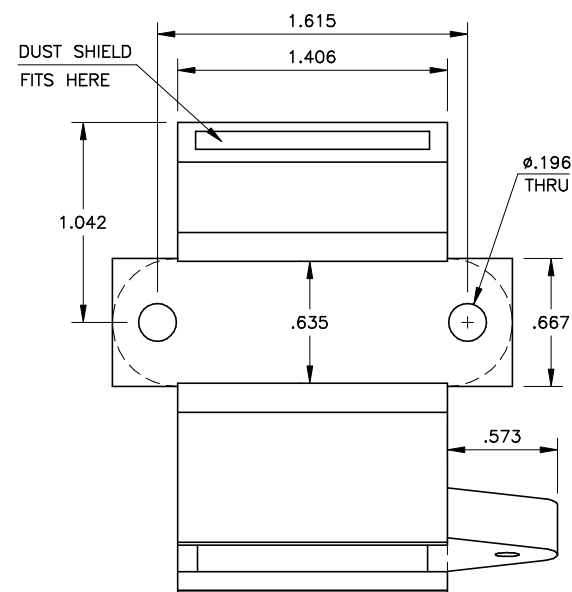
3' 7" ARCH BAR TRUCK

HALF SIZE 2 1/2" = 1'

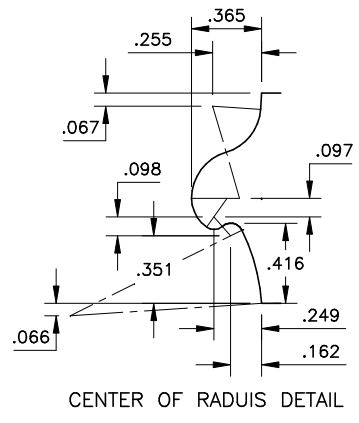
File: 2-25BOLSTER Rev: 8-4-2017



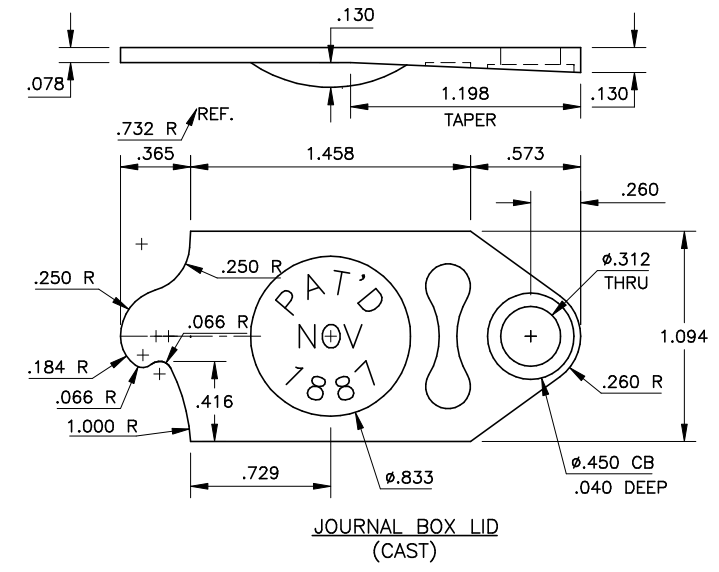
COLUMN POST



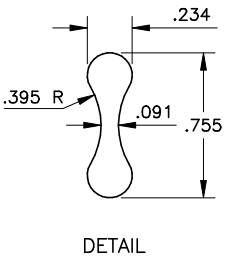
20-TON JOURNAL BOX
 ϕ 3 3/4" x 6 1/2"



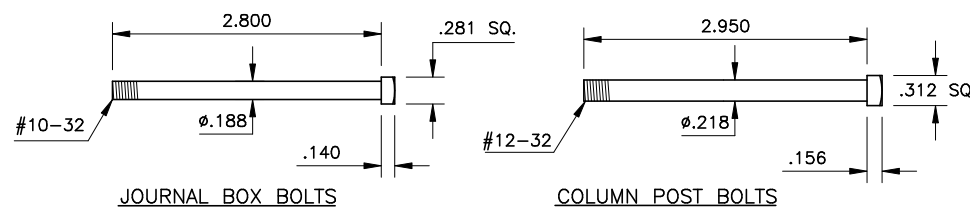
CENTER OF RADIUS DETAIL



JOURNAL BOX LID
 (CAST)

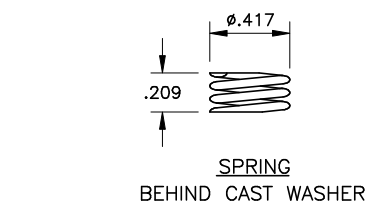
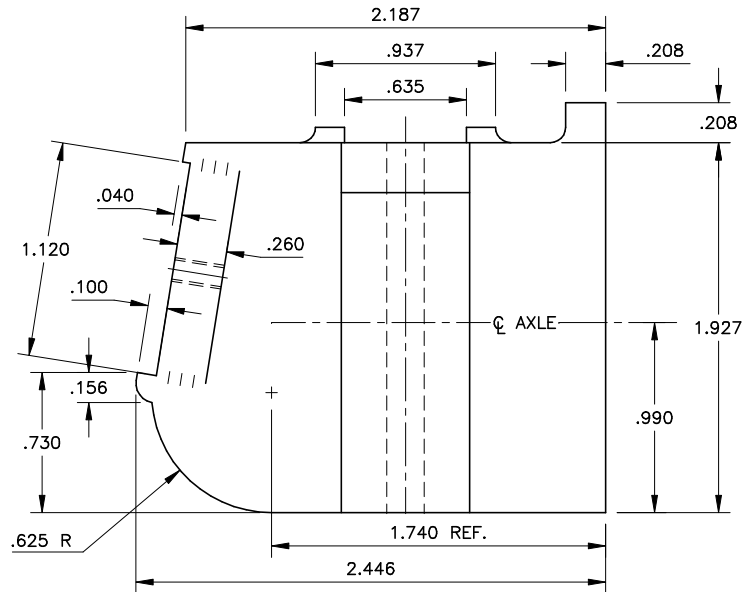


DETAIL

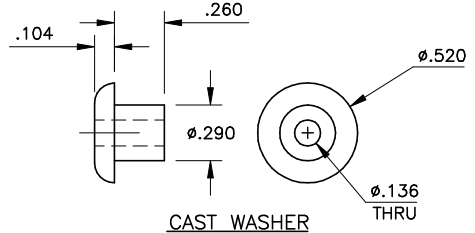


JOURNAL BOX BOLTS

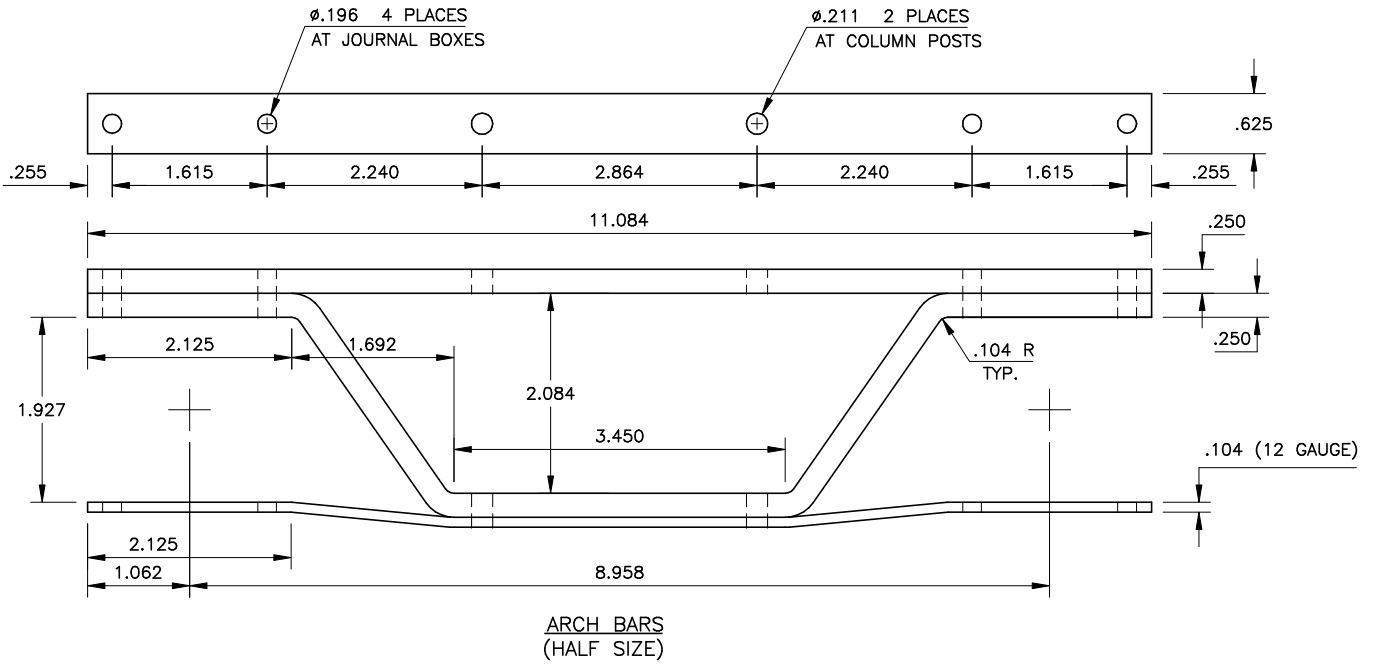
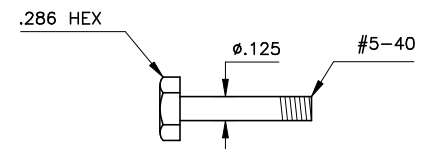
COLUMN POST BOLTS



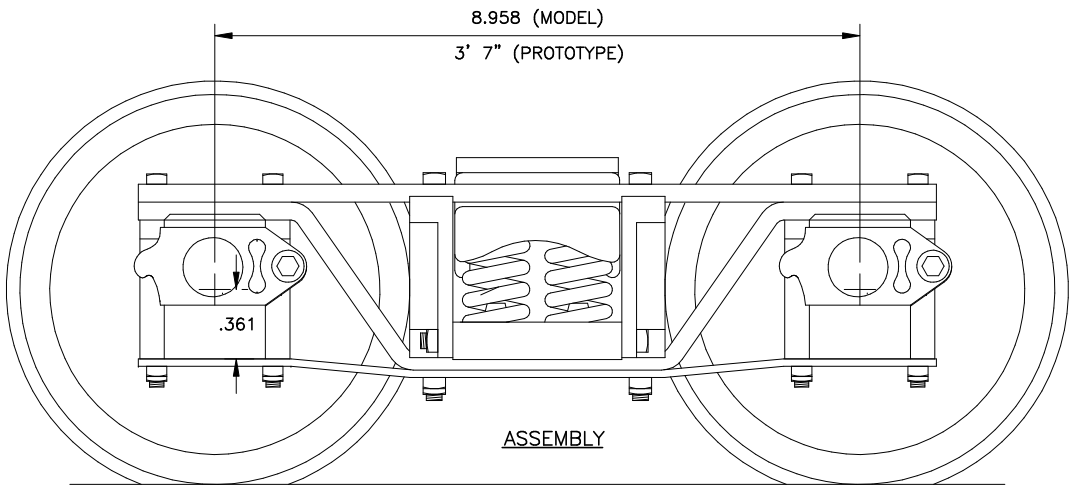
SPRING
 BEHIND CAST WASHER



CAST WASHER



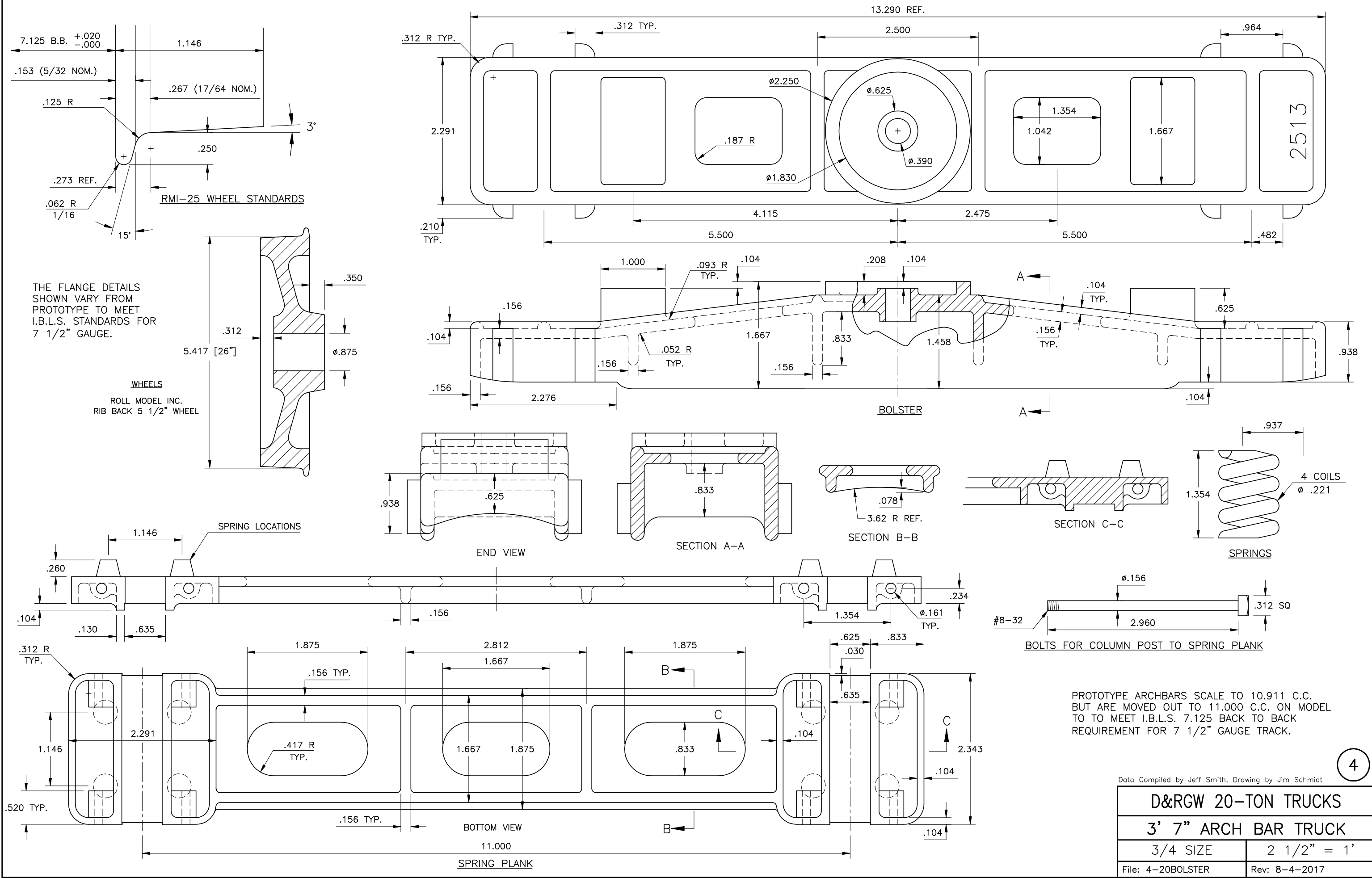
ARCH BARS
 (HALF SIZE)



ASSEMBLY

Data Compiled by Jeff Smith, Drawing by Jim Schmidt

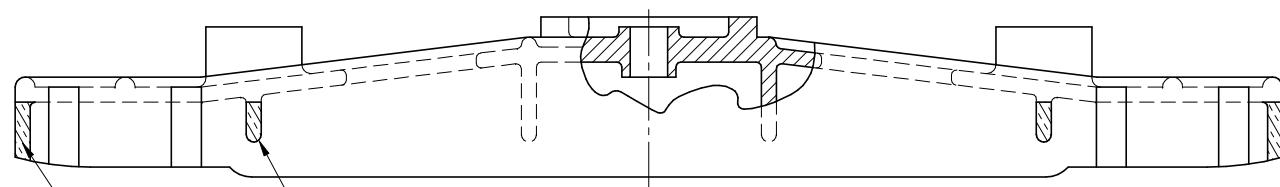
D&RGW 20-TON TRUCKS	
3' 7" ARCH BAR TRUCK	
FULL SIZE	2 1/2" = 1'
File: ftk3-20ARCHBARS	Rev: 7-31-2017



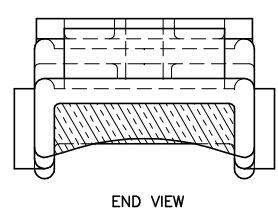
PROTOTYPE ARCHBARS SCALE TO 10.911 C.C. BUT ARE MOVED OUT TO 11.000 C.C. ON MODEL TO MEET I.B.L.S. 7.125 BACK TO BACK REQUIREMENT FOR 7 1/2" GAUGE TRACK.

Data Compiled by Jeff Smith, Drawing by Jim Schmidt

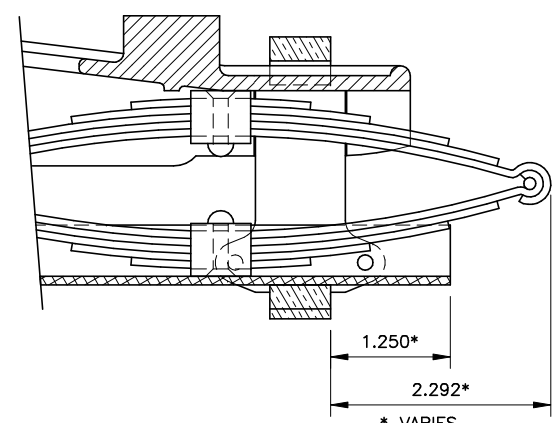
D&RGW 20-TON TRUCKS	
3' 7" ARCH BAR TRUCK	
3/4 SIZE	2 1/2" = 1'
File: 4-20BOLSTER	Rev: 8-4-2017



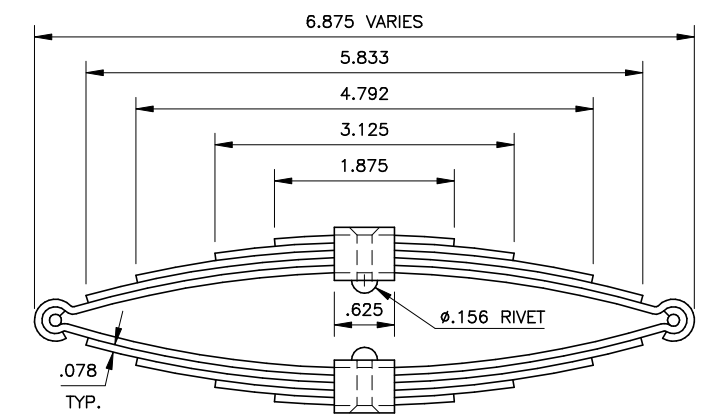
CUT END OPEN TO MAKE ROOM FOR LEAF SPRINGS
 REMOVE THESE WEBS TO MAKE ROOM FOR LEAF SPRINGS
 20-TON BOLSTER MODIFIED FOR CABOOSE



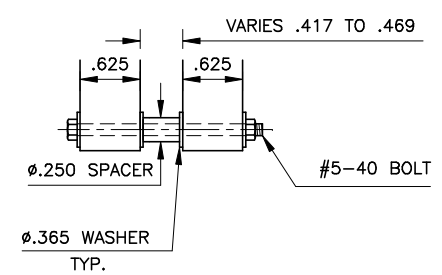
END VIEW



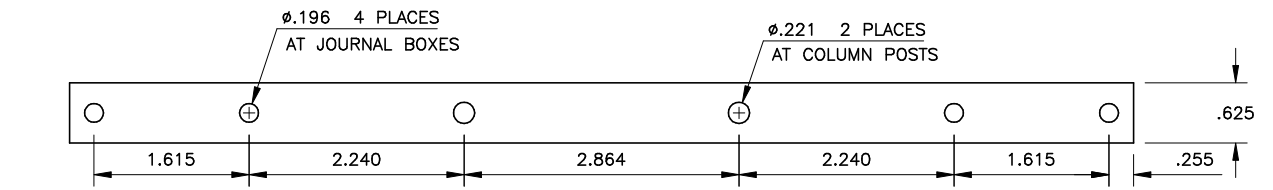
1.250*
 2.292*
 * VARIES



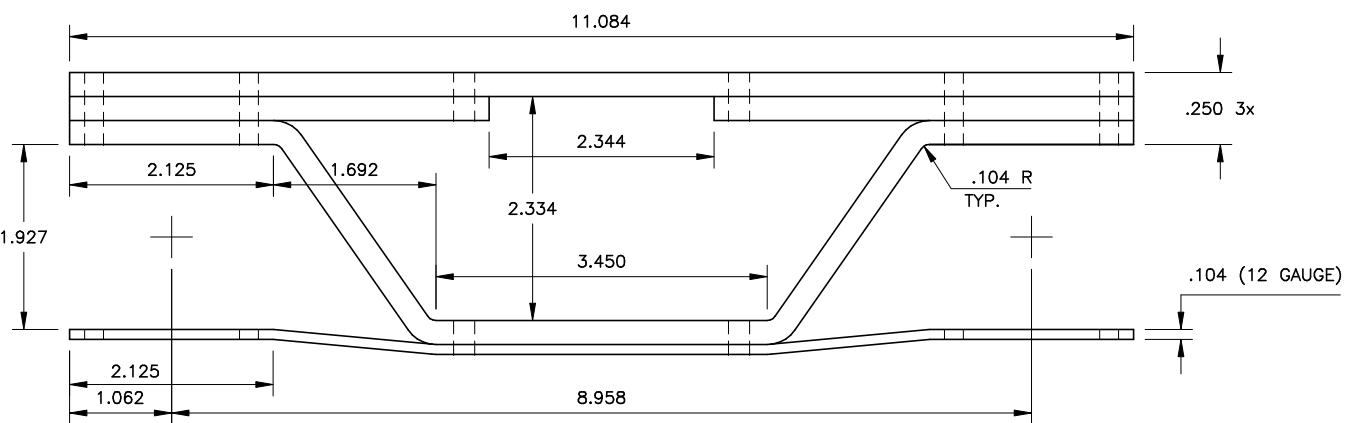
6.875 VARIES
 5.833
 4.792
 3.125
 1.875
 .625
 Ø.156 RIVET
 .078 TYP.
 SPRING LEAF LENGTHS ARE ALONG THE SPRING



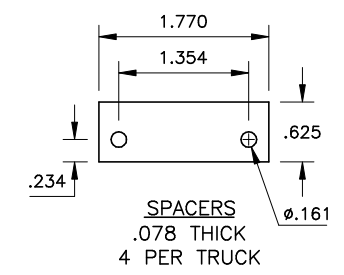
VARIES .417 TO .469
 .625
 .625
 Ø.250 SPACER
 #5-40 BOLT
 Ø.365 WASHER TYP.



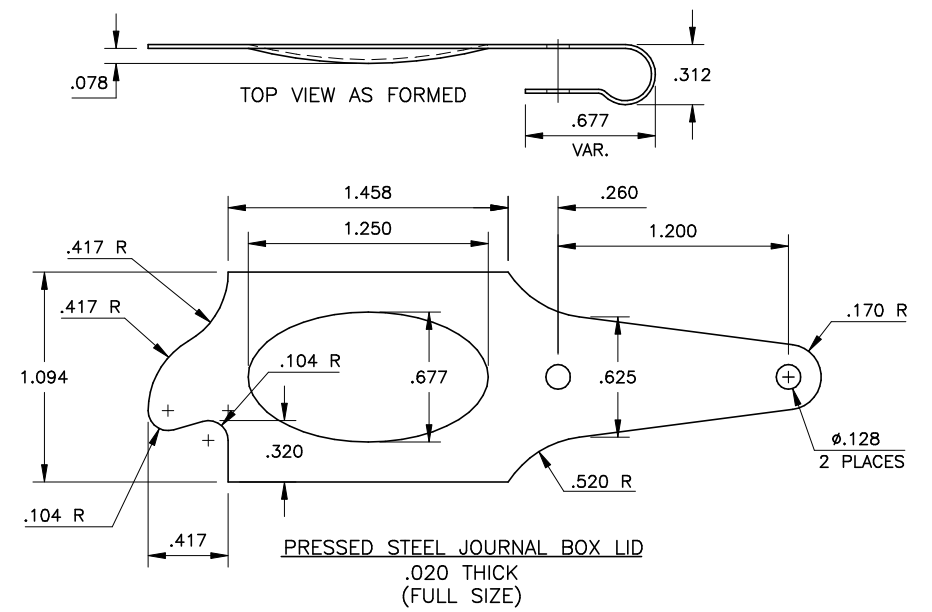
Ø.196 4 PLACES AT JOURNAL BOXES
 Ø.221 2 PLACES AT COLUMN POSTS



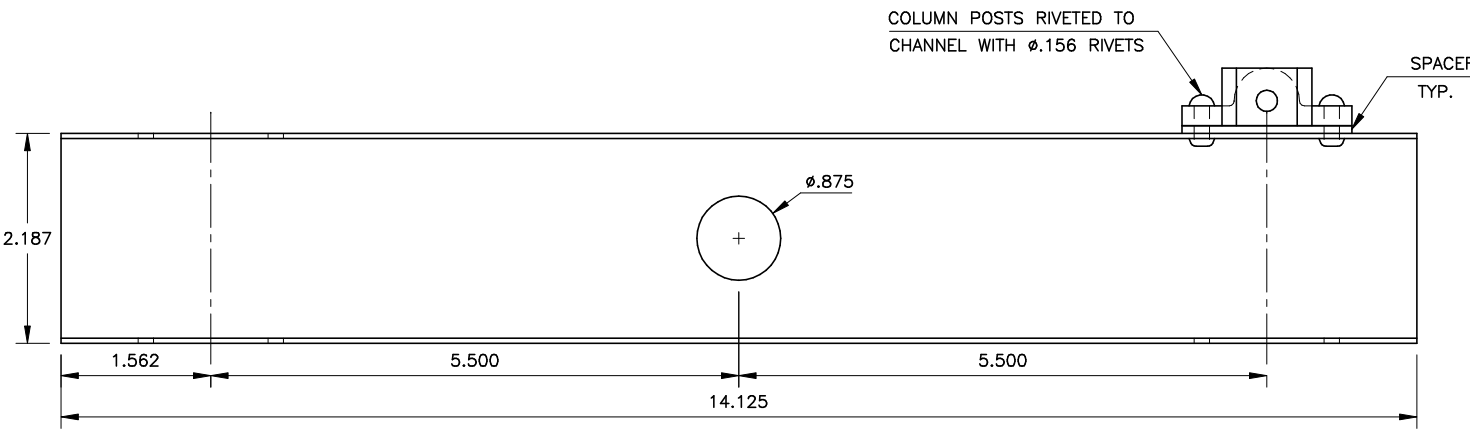
ARCH BARS



1.770
 1.354
 .625
 .234
 Ø.161
 SPACERS .078 THICK 4 PER TRUCK

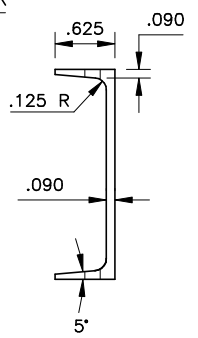


PRESSED STEEL JOURNAL BOX LID
 .020 THICK (FULL SIZE)

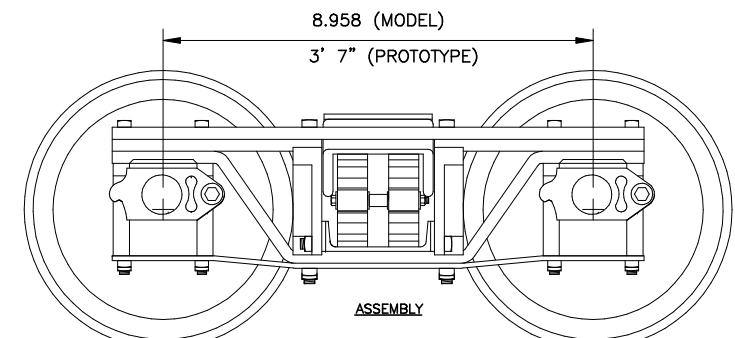


SPRING CHANNEL

COLUMN POSTS RIVETED TO CHANNEL WITH Ø.156 RIVETS
 SPACER TYP.



.625
 .090
 .125 R
 .090
 5'



ASSEMBLY

8.958 (MODEL)
 3' 7" (PROTOTYPE)

Data Compiled by Jeff Smith, Drawing by Jim Schmidt

D&RGW 20-TON TRUCKS
 MODIFIED FOR CABOOSE

HALF SIZE 2 1/2" = 1'

File: 5-20CABBOLST Rev: 7-29-2017